

**Notes on the genera *Annamanum* Pic and *Uraecha* Thomson  
(Coleoptera: Cerambycidae: Lamiinae: Lamiini)**

**M.-Y. Lin<sup>1</sup>, S.-Q. Ge<sup>2</sup>**

<sup>1,2</sup>Key Laboratory of Zoological Systematics and Evolution, Institute of Zoology, Chinese Academy of Sciences, Beichen West Road, Chaoyang Dist., Beijing, 100101, China.

<sup>1</sup>e-mail: linmeiying@ioz.ac.cn

<sup>2</sup>e-mail: gesq@ioz.ac.cn

**Key words:** *Uraecha*, *Annamanum*, new species, new synonym, Distribution, China.

**Abstract:** This paper deals with the genera *Annamanum* Pic, 1925 and *Uraecha* Thomson, 1864 belonging to the tribe Lamiini, including one new species, *Annamanum wenzhui* **sp. nov.** from Henan, Hubei and Shaanxi, China. Two new synonyms are proposed: *Uraecha longzhouensis* Wang & Chiang, 2000 **syn. nov.** = *Annamanum lunulatum* (Pic, 1934); *Uraecha perplexa* Gressitt, 1942 **syn. nov.** = *Uraecha yunnana* Breuning, 1936. New province records are included for *Uraecha angusta* and *U. chinensis*. A worldwide catalogue with detailed citations is presented.

## **Introduction**

The authors found an unknown species of the genus *Annamanum* during research of the fauna of Qinling. Additionally, we found quite a lot of confusing questions that needed to be answered for the genera *Annamanum* Pic and *Uraecha* Thomson, such as: are they two monophyletic genera? What are the relationships of *Uraecha longzhouensis* Wang & Chiang, 2000 and *Annamanum lunulatum* (Pic, 1934), are they synonyms? Does *Uraecha guerryi* (Pic, 1903) belong to the genus *Uraecha*, what about *Uraecha ochreomarmorata* Breuning, 1965, they look similar and both appear quite close to *Paruraecha*? How to separate *Uraecha angusta*, *U. chinensis* and *U. obliquefasciata*? Is *Uraecha attenuata* Pic, 1925 really a synonym of *U. angusta* or does it need to be reinstated?

It is beyond the authors' aim to review these two large genera in this paper. We gathered the literature to provide a catalogue, describe a new species and propose two new synonyms. This information is being made available prior to the publication of a

**M.-Y. Lin, S.-Q. Ge**

book on the Qinling fauna. Complete revisional work on these genera may require several years.

**Materials and methods**

Specimens studied are deposited in the following institutions, museums or private collections:

BITS: Bin Insect Taxonomy Studio, Beijing, China

IZAS: Institute of Zoology, Chinese Academy of Sciences, Beijing, China

MNHN: Muséum National d'Histoire Naturelle, Paris, France

SWU: Collection of Insects, Southwest University, Chongqing (ex South-west Agricultural University), Chongqing, China

The abbreviations of the type depository in the catalogue are as follows:

BMNH: The Natural History Museum, London, UK (NHML)

BPBM: Bernice Pauahi Bishop Museum, Honolulu, USA

CCCC: Collection of Chang-Chin Chen, Tianjin, China

EMHU: Entomological Museum, Hokkaido University, Sapporo, Japan

IRSNB: Institut royal des Sciences naturelles de Belgique, Bruxelles, Belgium

KUEC: Entomological Laboratory, Faculty of Agriculture, Kyushu University, Fukuoka, Japan

MHNL: Muséum d'Histoire Naturelle, Lyon, France

MSNG: Museo Civico di Storia Naturale "G. Doria", Genova, Italy = Civic Museum of Natural History "G. Doria", Genoa, Italy.

NHRS: Naturhistoriska riksmuseet, Stockholm, Sweden

RMNH: Rijksmuseum van Natuurlijke Historie (Naturalis Biodiversity Centre), Leiden, Netherlands

TD: Type depository

TL: Type locality

ZFMK: Zoologisches Forschungsmuseum Alexander Koenig, Bonn, Germany

**Taxonomy**

***Annamanum* Pic, 1925**

*Annamanum* Pic, 1925: 23. Type species *Annamanum vitalisi* Pic, 1925 (= *Uraecha thoracica* Gahan, 1894), by monotypy.

*Uraechopsis* Breuning, 1935b: 76. Type species *Uraecha chebana* Gahan, 1894, by original designation. Synonymized by Breuning, 1944: 401, 402.

*Annamanum*; Breuning, 1944: 401; Gressitt, 1951: 386; Breuning, 1961: 359; Rondon & Breuning, 1970: 458; Chiang, Pu & Hua, 1985: 137; Makihara, 2007: 597; Löbl & Smetana, 2010: 276.

**Distribution:** China, Japan, Vietnam, Laos, Cambodia, India, Sikkim, Myanmar, Malaysia.

**Remarks.** The genus *Annamanum* is very similar to *Uraecha* but can be distinguished by the mesosternite having a tubercle. It includes 29 species, among which 13 species are reported from China (Tavakilian & Chevillotte, 2017). In this paper, one new species is described and one new synonym (from genus *Uraecha*) is proposed, *A. guerryi* is listed under *Uraecha*, so there are still 29 species with 13 species from China.

***Annamanum wenzhui* sp. nov.**

Figs. 1-9

**Description.** Body length measured from frons to end of elytra 18.5-22.0 mm. Body brown to black brown, covered with reddish-brown and grayish-brown pubescence. Antennae mostly reddish-brown and all antennomeres darkened apically. Pronotum with three reddish-brown pubescent spots on middle area and one reddish-brown vitta beside each lateral tubercle; scutellum covered with reddish-brown pubescence; elytra with two oblique transverse dark-brown bands, one near middle and one located at apical fourth, with appearance of inverted V-shape, the basal half and apical fourth of elytra with mixed dark-brown and light reddish-brown pubescent spots all with vague shapes. Abdomen and legs mostly covered with light reddish-brown pubescence.

Head with antennae much longer than body length, with the

basal third of fifth (in male, Fig. 1) or sixth (in female, Fig. 3) antennomere extending elytral apex. Scape is the most stout antennomere, the fifth is the longest, the length from third to fifth increasing (male) or subequal (female), length from sixth to tenth decreasing, last segment longer than tenth. The last antennomere is subdivided, longer (male) or shorter (female) than scape. Pronotum with lateral tubercles strong at base and tip projecting backwards. Elytra with humeri distinctly rounded, apices rounded.

Male terminalia (Figs. 4-9): Tergite VIII (Fig. 4 a, c) broader than long, strongly narrowed apically, with apex slightly emarginated, sparsely with short setae. Spiculum gastrale longer than the ringed part of tegmen. Spiculum relictum shorter than half the length of spiculum gastrale. Tegmen (Figs. 5 & 8) 3.4 mm in length; lateral lobes slender, about 1.0 mm in length and 0.12 mm in width, with each apex rounded, provided with setae which are shorter than half of lateral lobe, finely setose oblique ridge in base (in ventral view, Fig. 8). Median lobe moderately curved (Fig. 9 b), shorter than tegmen (15 : 17); median struts (Fig. 9 c) shorter than half the length of median lobe; ventral plate rounded at apex (Fig. 9a) ; endophallus more than twice the length of median lobe.

**Diagnosis.** This species is similar to *A. thoracicum* (Gahan, 1895) from Myanmar by the brown spots on pronotum, darker tips of each antennomere, but can be distinguished by the middle black macula on elytra, which is an oblique band in the same direction of the one on the apical 1/4 (reaching suture or not sometimes), while it is a semicircle surrounded by a grayish arc and never reaches the suture in *A. thoracicum* (Gahan, 1895).

**Specimens examined.** Holotype, male, Shaanxi, Ningshan, Huoditang, alt. 1500 m, 2007.VIII.10, leg. Wen-Zhu Li (IZAS, IOZ(E)2002898). Paratypes: 1 male, Shaanxi, Ningshan, Huoditang, alt. 1580 m, 1998.VIII.21 leg. De-Cheng Yuan (IZAS, IOZ(E)2002899); 1 female, Henan Province, Nanyang City, Neixiang County, Baotianman Shengtailvyouqu (eco-tourism area), env. Huiyin Dajjudian (hotel), alt. 1350 m, 111.92973°E, 33.51190°N, leg. Qiao-Zhi Yang (BITS); 1 male, Hubei, Shennongjia, Hongpinglinchang, 1680 m, 1980.VII.14, leg. Pei-Yu Yu (IZAS, IOZ(E)2002900).

**Distribution.** China: Shaanxi, Henan, Hubei.

**Etymology.** This species is named after the insect painter Mr. Wen-Zhu Li, who is the collector of the holotype and who helped the first author a lot on their collecting trip to Qinling Mts. in May to June of 2007. The epithet is a noun in the genitive case.

***Annamanum lunulatum* (Pic, 1934)**

Figs. 10-12

*Urecha* (sic) *lunulata* Pic, 1934: 34. TL: Vietnam, Tonkin, Chapa. TD: MNHN.

*Annamanum lunulatum*: Breuning, 1944: 402; Breuning, 1961: 359; Pu, 1991: 250.

*Uraecha longzhouensis* Wang & Chiang, 2000: 46, figs 1-4. TL: China, Guangxi. TD: SWU. **syn. nov.**

*Uraecha longzhouensis*; Hua *et al*, 2009: 470; Löbl & Smetana, 2010: 288

**Remarks.** The holotype of *Uraecha longzhouensis* Wang & Chiang, 2000 (Fig. 11) is a male of *Annamanum lunulatum* (Pic, 1934) (Fig. 10). It matches with the female holotype quite well except the antennae are longer and without clear darker apex from antennomere III to XI, which is the common sexual difference of the genus. Therefore, *Uraecha longzhouensis* Wang & Chiang, 2000 should be synonymized with *Annamanum lunulatum* (Pic, 1934).

**Specimens examined.** Holotype of *Urecha lunulata* Pic, 1934, female, Vietnam, Tonkin, Chapa (MNHN, examined through pictures). Holotype of *Uraecha longzhouensis* Wang & Chiang, 2000, male, China, Guangxi (SWU, examined through pictures). Yunnan: 1 male, Jinghong, Menghai county, Nabanhe Nature Reserve, Guomenshan, alt. 1114 m, 100.60610°E, 22.24644°N, 2009.V.26, leg. L.Z. Meng by Malaise trap (IZAS, IOZ(E)1858627).

**Distribution.** China: Guangxi, Yunnan; Vietnam.

***Uraecha Thomson, 1864***

*Uraecha* Thomson, 1864: 84. Type species: *Uraecha bimaculata* Thomson, 1864, by original designation.

*Uraecha*; Lacordaire, 1869: 302, 335; Matsushita M. 1933: 320; Breuning, 1944: 406; Gressitt, 1951: 388; Breuning, 1961: 360; Pu, 1980: 74; Hua *et al.*, 1993: 247; Wang & Chiang, 2000: 47-48; Makihara, *In*: N. Ohbayashi & Niisato, 2007: 596; Löbl & Smetana, 2010: 287.

**Remarks.** The genus *Uraecha* included 17 species/subspecies (not including *U. guerryi*), among which 8 species reported from China (Tavakilian & Chevillotte, 2017). In this paper, two new synonyms are proposed, *U. guerryi* is included, so there are 16 species/subspecies with 7 species from China.

**Distribution.** China, Japan, Vietnam, Laos, India, Indonesia.

***Uraecha angusta* (Pascoe, 1857)**

Figs 13-16

*Monohammus? angustus* Pascoe, 1857: 49. TL: China Borealis. TD: BMNH.

*Uraecha attenuata* Pic, 1925: 23. TL: China, Tibet. TD: MNHN. Synonymized by Breuning, 1944: 407.

*Orsidis bimaculata* Matsushita, 1933: 330, pl. V, fig. 13. TL: China, Taiwan, Hori. TD: EMHU. [HN] Synonymized by Breuning, 1944: 407.

*Uraecha angusta* subsp. *horishana* Matsushita, 1935: 312. [RN for *Orsidis bimaculata* Matsushita, 1933]

*Uraecha angusta*: Aurivillius, 1922: 113; Matsushita, 1933: 330, 334; Gressitt, 1938: 157; Gressitt, 1939: 111; Gressitt, 1942b: 209; Breuning, 1944: 407, fig. 298; Gressitt, 1951: 388; Breuning, 1961: 360; Pu, 1980: 74, pl. VII, fig. 98; Yu & Nara, 1988: 37, 85, pl. 17, fig. 1; Nakamura, Makihara & Saito, 1992: 83; Hua *et al.*, 1993: 247, pl. XIV, fig. 214b; Yu, Nara & Chu, 2002: 61, 112, pl. 21, fig. 1; Hua, 2002: 235; Chou, 2004: 293, figs.; Chou, 2008: 293, figs.; Hua *et al.*, 2009: 259, 404, pl. CXX, 1390 (picture is wrong); Löbl & Smetana, 2010: 287; Nakamura *et al.*, 2014: 141.

*Uraecha angusta* ab. *horishana*; Breuning, 1944: 407.

*Uraecha angustus*; Wang & Chiang, 2000: 46.

**Remarks.** This species was confused with *Uraecha chinensis* Breuning, 1935 by Gressitt and other colleagues. Several specimens of the latter were misidentified as *U. angusta*, including the localities of Beijing, Henan and Guizhou. However, we can not conclude that *U. angusta* doesn't occur in those localities. We can only confirm that Hebei, Shaanxi, Anhui, Hubei, Hunan, Jiangxi and Guangxi do have *U. angusta*, by examining specimens in IZAS and other collections.

Although the Southern population (Figs 15, 16) is more or

**M.-Y. Lin, S.-Q. Ge**

less different from the Northern population, such as the V-shaped black marking before the middle and the subapical black maculae more distinct, we won't reinstate *Uraecha attenuata* Pic, 1925 but consider them as varieties within same species.

**Material examined.** Shaanxi: 1 male (Fig. 13), Hanzhong, Yangxian, Huayangzhen, 2014.VII.19, leg. Yi-Zhou Liu (IZAS); 1 female, Liuba County, Miaotaizi, 1979.IX.5, leg. Zhong-Ming Hu (IZAS). Anhui: 1 female, Yuexi County, Yaoluoping Nat. Rev., 2015.VII (IZAS, ex Anhui University through Dr. Jie Fang). Zhejiang: 1 male, Hangzhou (through pictures from friends); 1 female, Tianmushan (through pictures from Bo Peng). Jiangxi: 1 male, Lushan, 1100 m, 1975.VI.24, leg. You-Qiao Liu (IZAS). Guangxi: 1 male 1 female, Jinxiu, Pingban, Luoyingou, 1100m, 2016.IV.17, leg. Jin-Teng Zhao (CCCC, C16Z0104-05); 1 male 1 female (Fig. 16), Jinxiu, Dayaoshan, Luoyingou, 1000m, 2016.VI.2, leg. Jin-Teng Zhao (CCCC, C16Z1734-35); 1 female, Jinxiu, alt. 1100 m, 2017.V.18, leg. Local collector (IZAS).

**Distribution.** China (Beijing, Hebei, Henan, Shaanxi, Ningxia, Anhui (new record), Jiangsu, Zhejiang, Hubei, Hunan, Jiangxi, Fujian, Taiwan, Guangdong, Guangxi, Sichuan, Guizhou, Xizang), Vietnam.

Doubtful distribution. Beijing, Henan, Ningxia, Jiangsu, Fujian, Guangdong, Sichuan and Vietnam.

**Host plants.** *Cinnamomum camphora* (Linnaeus) J. Presl (LAURACEAE), *Phoebe* sp. (LAURACEAE), *Pinus tabulaeformis* Hort. ex C. Koch (PINACEAE), *Salix* sp. (SALICACEAE), *Vernicia fordii* (Hemsley) Airy Shaw (EUPHORBIACEAE).

***Uraecha chinensis* Breuning, 1935**

Figs 17-19

*Uraecha chinensis* Breuning, 1935a: 61. TL: China, Hebei, Zhangjiakou (Nordchina: Kalgan). TD: MNHN.

*Uraecha chinensis*; Breuning, 1944: 408; Gressitt, 1951: 389; Breuning, 1961: 360; Wang & Chiang, 2000: 45; Hua, 2002: 235; Hua *et al*, 2009: 470; Löbl & Smetana, 2010: 288.

**Remarks.** The type locality was published as “Nordchina: Kalgan,”

but the type label was written “Kalgan / Mong.” It was considered as “E. Mongolia (Kalgan)” by Gressitt (1951), then treated as Inner Mongolia by Hua (2002) and Löbl & Smetana (2010). Actually, “Kalgan” was the Mongolian name for Zhangjiakou in Hebei Province. We did not examined any specimens from Inner Mongolia, therefore deleting it from the distribution list herein.

**Material examined.** Holotype, male, Kalgan, Mong. (= Hebei, Zhangjiakou) (MNHN). Paratype, female, N. China, leg. Fortune (BMNH, Fry Coll. 1905.100, 11386). Beijing: 2 males 1 female, Shangfangshan, 400m, 1961.VII.19, leg. Shuyong Wang (IZAS); 1 male, same data but 1961.VII.14; 1 male (Fig. 18), Miyun County, Wulingshanlinchang, 2015.VII.7-8. leg. Mei-Ying Lin by light trap (IZAS); 1 male, Miyun County, Wulingshan, 2015.VIII.13, leg. Sheng-Ping Yu (IZAS). Henan: 1 male, Tongbaishan, 500 m, 2001.VII.16, leg. Si-Qin Ge; 1 female, Xinxian, Liankangshan, 2014.VIII.9, leg. Guo-Xi Xue. Shaanxi: 1 male (Fig. 19), Ningshan County, Huoditang, Yaquegou, 1600-1700 m, 1998.VII.28, leg. Jun Chen (IZAS, IOZ(E) 1896998). Jiangsu: 1 female, Nanjing, Longpanlu, Nanjing Forest University, 2015.VI.19, leg. Lu Qian (through pictures taken by Lu Qian). Anhui: 1 female, Yuexi County, Yaoluoping Nat. Rev., 2015.VII (IZAS, ex Anhui University through Dr. Jie Fang). Zhejiang: 1 female, T’ienmu Shan, 1936.VII.24, leg. O. Piel (IZAS, labeled as *U. angusta* by Gressitt); 1 female, T’ienmu Shan, 1937.VIII.8 (IZAS, labeled as *U. angusta*); 1 female, Mokanshan, 1935.V.14; 1female, Mokanshan, 1935.V.21; 1 female, Hangzhou Plant Garden, 1976.V.25, leg. Rui-Jin Chen by light trap. Hunan: 1 female, Hunantongdao, 1081.V. 21-30, leg. Li-Jun Zhang; 1 male, Shaoyang, 1981. Fujian: 1 male, Huangkeng, Guilin, 1980. VI.30, leg. Shi-Cheng Qi.

**Distribution.** China: Beijing (new record), Hebei, Henan (new record), Shaanxi (new record), Jiangsu (new record), Anhui (new record), Zhejiang (new record), Hunan (new record), Fujian (new record).

***Uraecha obliquefasciata* Chiang, 1951**

Fig. 20

*Uraecha obliquefasciata* Chiang, 1951: 54, pl. 1, fig. 6. TL: China, Guizhou, Hwachi. TD: BPBM, ex Entomological Laboratory,



**M.-Y. Lin, S.-O. Ge**

Kweichow University, Hwa-chi.

*Uraecha obliquefasciata*; Breuning, 1961: 360; Wang & Chiang, 2000: 46; Hua, 2002: 235; Hua *et al*, 2009: 259, 404, pl. CXX, 1391; Löbl & Smetana, 2010: 288; Lin, 2015: 184, fig. 185-1.

**Remarks.** This species is very similar to *U. chinensis*. It was separated by the obliquely truncated elytral apex (Wang & Chiang, 2000). However, some individuals of *U. chinensis* from Beijing (Fig. 18) also have similar elytral apices. Their relationship needs further research.

**Distribution.** China: Guizhou.

***Uraecha yunnana* Breuning, 1936**

Figs 21-22

*Uraecha yunnana* Breuning, 1936: 296. TL: China, Yunnan. TD: MNHN.

*Uraecha perplexa* Gressitt, 1942a: 3, pl. 1, fig. 7. TL: China, Sichuan, Chengtu (Chengdu). TD: SYSU. **syn. nov.**

*Uraecha perplexa*; Gressitt, 1951: 389; Breuning, 1961: 360; Wang & Chiang, 2000: 46; Hua, 2002: 235; Hua *et al*, 2009: 259, 404, pl. CXX, 1392; Löbl & Smetana, 2010: 288.

*Uraecha yunnana*; Breuning, 1944: 407, fig. 300; Gressitt, 1951: 389; Breuning, 1961: 360; Wang & Chiang, 1988: 144; Wang & Chiang, 2000: 46; Hua, 2002: 235; Hua *et al*, 2009: 470; Löbl & Smetana, 2010: 288.

**Remarks.** Gressitt (1942) mentioned that *U. perplexa* “Differs from *yunnana* Pic in the elytra lacking granules and lacking a dark spot at middle of base of each”. However, the unique type specimens of the latter with pubescence terribly rubbed on the basal half of the elytra, which made the granules visible, while the former type specimens with tiny granules are covered by pubescence. Based on the type specimens and a series of common specimens, *Uraecha perplexa* Gressitt, 1942 should be considered as a junior synonym of *Uraecha yunnana* Breuning, 1936.

**Material examined.** Holotype of *Uraecha yunnana* Breuning, 1936, female (Fig. 21), Junnan-Sen, Yunnan, coll. J. Clermont (MNHN, ex Coll. M. Pic). Holotype of *Uraecha perplexa* Gressitt, 1942, male (Fig. 22), Sichuan, Chengdu (Chengtu), 1939.V.23 (SYSU, ex University of Nankin, Jiangsu). Sichuan: 1 male, Chengtu,

**M.-Y. Lin, S.-Q. Ge**

1941.VIII.16, leg. K. O. V. Lieu (IZAS, L/30); 1 female, Emeishan, Baoguosi, alt. 550-750 m, 1957.V.8, leg. Ke-Ren Huang (IZAS); 1 female, Emeishan, Qingyinge, 1957.VI.3, leg. Zong-Yuan Wang (IZAS); 1 female, Yuechixian, 1981.VII.18, leg. Dong-Ming Luo (IZAS); 1 female, Pingxishan, leg. Qing-Ping Zou (IZAS).

**Distribution.** China: Sichuan, Yunnan.

**Catalogue of other species in the genera  
*Annamanum* and *Uraecha*:**

***Annamanum albisparsum* (Gahan, 1888)**

*Monohammus albisparsus* Gahan, 1888: 62. TL: China, Jiangxi, Kiu Kiang (Jiujiang). TD: BMNH.

*Uraecha albonotata* Pic, 1925: 22. TL: China. TD: MNHN. Synonymized by Breuning, 1944b: 404.

*Annamanum albisparsum*: Breuning, 1944: 404, fig. 293; Gressitt, 1951: 386; Breuning, 1961: 360; Chiang, Pu & Hua, 1985: 137, pl. X, fig. 157; Lingafelter & Hoebeke, 2002: 98, pl. 19, fig. e; Hua, 2002: 193; Hua *et al.*, 2009: 195, 334, pl. LXIII, 728; Löbl & Smetana, 2010: 276.

**Distribution.** China: Fujian, Jiangxi, Hunan, Guangxi, Guizhou.

***Annamanum albomaculatum* (Breuning, 1935)**

*Uraechopsis albomaculata* Breuning, 1935b: 76. TL: Myanmar, Bhamo. TD: MSNG.

*Annamanum albomaculatum*: Breuning, 1944: 404, fig. 294; Breuning, 1961: 360; Löbl & Smetana, 2010: 276.

**Distribution.** China, Myanmar.

***Annamanum alboplagiatum* Breuning, 1966**

*Annamanum alboplagiatum* Breuning, 1966: 2. TL: India, Khasi Hills. TD: IRSNB.

**Distribution.** India.

***Annamanum annamanum* Breuning, 1960**

*Annamanum annamana* Breuning, 1960b: 31. TL: Vietnam, Annam. TD: MNHN.

*Annamanum annamanum*; Breuning, 1961: 360.

**Distribution.** Vietnam.

***Annamanum annulicorne* (Pic, 1934)**

*Urecha* (sic) *annulicornis* Pic, 1934: 34. TL: Vietnam, Chapa. TD: MNHN.  
*Annamanum annulicorne*: Breuning, 1938: 191; Breuning, 1944: 402, fig. 291; Breuning, 1961: 359.

**Distribution.** Vietnam.

***Annamanum basigranulatum* Breuning, 1970**

*Annamanum basigranulatum* Breuning, 1970: 88. TL: India, Madras. TD: Musée de Zoologie de Lausanne; ex collection René Chassot.

**Distribution.** India.

***Annamanum cardoni* Breuning, 1953**

*Annamanum Cardoni* Breuning, 1953: 2, fig. 2. TL: India, Barway. TD: IRSNB.

*Annamanum cardoni*; Breuning, 1961: 360; Löbl & Smetana, 2010: 276.

**Distribution.** India.

***Annamanum chebanum* (Gahan, 1894)**

*Uraecha chebana* Gahan, 1894: 41. TL: Myanmar, Carin Mts.. TD: MSNG.

*Uraechopsis chebanus*: Breuning, 1935b: 76.

*Annamanum chebanum*: Breuning, 1944: 402, fig. 290; Gressitt, 1951: 387; Breuning, 1961: 359; Rondon & Breuning, 1970: 459; Hua, 2002: 193; Hua *et al*, 2009: 449; Löbl & Smetana, 2010: 276.

**Distribution.** China: Guangdong, Guangxi, Yunnan; Vietnam, Laos, India, Myanmar.

***Annamanum fuscomaculatum* Breuning, 1979**

*Annamanum fuscomaculatum* Breuning, 1979: 99. TL: China, Yunnan. TD: MNHN.

*Annamanum fuscomaculatum*; Hua, 2002: 193; Hua *et al*, 2009: 449; Löbl & Smetana, 2010: 276.

**Distribution.** China: Yunnan.

***Annamanum griseolum* (Bates, 1884)**

*Uraecha griseola* Bates, 1884: 240. TL: Japan, Kashiwagi. TD: MNHN.

*Uraecha griseata*; Aurivillius, 1922: 113 [misspelling]; Matsushita, 1933: 334; Breuning, 1944: 407, fig. 299.

*Annamanum griseatum*; Breuning, 1949: 7 [misspelling]; Breuning, 1961: 359 [misspelling].

**M.-Y. Lin, S.-Q. Ge**

*Annamanum griseolum*; Makihara, In: N. Ohbayashi & Niisato, 2007: 597, pl. 61, figs 13-15; Löbl & Smetana, 2010: 276.

**Distribution.** Japan.

**Host plants.** *Betula ermanii* Chamisso (BETULACEAE), *Prunus grayana* Maximowicz (ROSACEAE).

***Annamanum griseomaculatum* Breuning, 1936**

*Annamanum griseomaculatum* Breuning, 1936: 296. TL: Vietnam, Tonkin, Chapa. TD: MNHN.

*Annamanum griseomaculatum*; Breuning, 1944: 404; Breuning, 1961: 359.

**Distribution.** Vietnam.

***Annamanum humerale* (Pic, 1934)**

*Urecha* (sic) *humeralis* Pic, 1934: 35. TL: Vietnam, Tonkin, Chapa. TD: MNHN.

*Annamanum humerale*: Breuning, 1944: 402; Breuning, 1961: 359; Weigel, Meng & Lin, 2013: 48.

**Distribution.** China: Yunnan; Vietnam.

***Annamanum indicum* Breuning, 1938**

*Annamanum indicum* Breuning, 1938: 191. TL: India, Kalimpong. TD: Forest Research Institute, Dehra Dun.

*Annamanum indicum*; Breuning, 1944: 403; Breuning, 1961: 359; Löbl & Smetana, 2010: 276.

**Distribution.** India.

***Annamanum irregulare* (Pic, 1925)**

*Blepephæus irregularis* Pic, 1925: 17. TL: Cambodia. TD: MNHN.

*Annamanum irregulare*: Breuning, 1944: 404, fig. 295; Breuning, 1961: 360.

**Distribution.** Cambodia.

***Annamanum mediomaculatum* Breuning, 1962**

*Annamanum mediomaculatum* Breuning, 1962: 19, fig. page 20. TL: Laos, Thakhek. TD: BPBM.

*Annamanum mediomaculatum*; Rondon & Breuning, 1970: 459; Hua, 1987: 94; Hua, 2002: 193; Hua *et al*, 2009: 449; Löbl & Smetana, 2010: 276.

**Distribution.** China: Guangxi; Laos.

M.-Y. Lin, S.-Q. Ge

***Annamanum ochreopictum* Breuning, 1969**

*Annamanum ochreopictum* Breuning, 1969: 187. TL: Malaysia, Malacca.  
TD: MNHN.

**Distribution.** Malaysia.

***Annamanum plagiatum* (Aurivillius, 1913)**

*Orsidis plagiata* Aurivillius, 1913: 240. TL: Malaysia, Sarawak, Kusing  
Hills. TD: NHRS.

*Annamanum plagiatum*: Breuning, 1944: 405; Breuning, 1961: 360.

**Distribution.** Malaysia.

***Annamanum rondoni* Breuning, 1962**

*Annamanum rondoni* Breuning, 1962: 21, fig. page 21. TL: Laos, Vientiane.  
TD: BPBM.

*Annamanum rondoni*; Rondon & Breuning, 1970: 459, fig. 32 j.

**Distribution.** Laos.

***Annamanum scheyeri* Breuning, 1962**

*Annamanum scheyeri* Breuning, 1962: 20, fig. page 20 (bas). TL:  
Laos, Séno. TD: BPBM.

**Distribution.** Laos.

***Annamanum sikkimense* Breuning, 1942**

*Annamanum sikkimense* Breuning, 1942: 119. TL: Sikkim. TD: BMNH.

*Annamanum sikkimense* Breuning, 1944: 403. TL: Sikkim. TD: BMNH.  
[unnecessary redescription of *Annamanum sikkimense* Breuning,  
1942]

*Annamanum sikkimense*; Breuning, 1961: 359; Weigel, 2006: 502; Löbl &  
Smetana, 2010: 276.

*Annamanum touzalini* Breuning, 1979: 99. TL: India, Darjeeling. TD:  
MNHN. Synonymized by Weigel, 2006: 502.

**Distribution.** India, Sikkim.

***Annamanum sinicum* Gressitt, 1951**

*Annamanum thoracicum sinicum* Gressitt, 1951: 387, pl. 16, fig. 10. TL:  
Fujian, Kuatun (Guadun). TD: ZFMK.

*Annamanum sinicum*; Breuning, 1956: 233; Breuning, 1961: 360; Hua,  
2002: 193; Hua *et al.*, 2009: 449; Löbl & Smetana, 2010: 276; Lin,  
2014: 136, figs 69-71; Lin, 2015: 154, fig. 155-1.

**Distribution.** China: Zhejiang, Fujian, Jiangxi, Sichuan, Yunnan.

M.-Y. Lin, S.-Q. Ge

***Annamanum strandi* Breuning, 1938**

*Annamanum Strandii* Breuning, 1938: 191. TL: China, Yunnan. TD: MNHN.

*Annamanum strandi*; Breuning, 1944: 403, fig. 292; Gressitt, 1951: 387; Breuning, 1961: 359; Pu, 1992: 605; Hua, 2002: 193; Hua *et al*, 2009: 449; Löbl & Smetana, 2010: 276.

**Distribution.** China: Yunnan, Xizang.

***Annamanum subauratum* Breuning, 1958**

*Annamanum subauratum* Breuning, 1958: 266. TL: China, Sichuan. TD: MNHN.

*Annamanum subauratum*; Breuning, 1961: 360; Hua *et al*, 2009: 449; Löbl & Smetana, 2010: 276.

**Distribution.** China: Sichuan.

***Annamanum subirregularare* Breuning, 1950**

*Annamanum subirregularare* Breuning, 1950: 515. TL: Vietnam, Annam. TD: MHNL.

*Annamanum subirregularare*; Breuning, 1961: 360.

**Distribution.** Vietnam.

***Annamanum szetschuanicum* Breuning, 1947**

*Annamanum szetschuanicum* Breuning, 1947: 8. TL: China, Sichuan. TD: NHRS.

*Annamanum szetschuanicum*; Gressitt, 1951: 387; Breuning, 1961: 359; Hua, 2002: 193; Hua *et al*, 2009: 449; Löbl & Smetana, 2010: 276.

**Distribution.** China: Sichuan.

***Annamanum thoracicum* (Gahan, 1894)**

*Uraecha thoracica* Gahan, 1894: 42. TL: Myanmar, Carin Mts. TD: BMNH.

*Annamanum Vitalisi* Pic, 1925: 24. TL: Vietnam, Annam. TD: MNHN. Synonymized by Breuning, 1944: 405.

*Annamanum thoracicum*: Breuning, 1944: 405, fig. 296; Breuning, 1961: 360; Rondon & Breuning, 1970: 459, fig. 32 i; Löbl & Smetana, 2010: 276.

**Distribution.** Laos, Malaysia, Myanmar, Vietnam.

***Annamanum yunnanum* Breuning, 1947**

*Annamanum yunnanum* Breuning, 1947a: 8. TL: China, Yunnan. TD: NHRS.

**M.-Y. Lin, S.-Q. Ge**

*Annamanum yunnanum*; Gressitt, 1951: 388; Breuning, 1961: 360; Hua, 2002: 193; Hua *et al*, 2009: 449; Löbl & Smetana, 2010: 276.

**Distribution.** China: Yunnan.

***Uraecha albosparsa* Pic, 1925**

*Uraecha albosparsa* Pic, 1925: 23. Type locality: Vietnam, Tonkin. TD: MNHN.

*Uraecha albosparsa*; Breuning, 1944: 408; Breuning, 1961: 360.

**Distribution.** Vietnam.

***Uraecha albovittata* Breuning, 1956**

*Uraecha albovittata* Breuning, 1956: 233. TL: China, Fujian, Kuatun (= Guadun). TD: ZFMK.

*Uraecha albovittata*; Breuning, 1961: 360; Wang & Chiang, 2000: 45; Hua, 2002: 235; Hua *et al*, 2009: 470; Löbl & Smetana, 2010: 287; Ulmen *et al.*, 2010: 11.

**Distribution.** China: Fujian.

***Uraecha bimaculata bimaculata* Thomson, 1864**

*Uraecha Bimaculata* Thomson, 1864: 85. TL: Japan. TD: MNHN.

*Uraecha bimaculata*; Lacordaire, 1869: 336; Matsushita M. 1933: 334; Breuning, 1944: 406, fig. 297; Gressitt, 1951: 389; Breuning, 1961: 360; Lee, 1987: pl. 20, fig. 225; Wang & Chiang, 2000: 45; Hua, 2002: 235; Hua *et al*, 2009: 470.

*Uraecha bimaculata bimaculata*; Niisato, 1994: 158; Makihara, *In*: N. Ohbayashi & Niisato, 2007: 596, pl. 61, figs. 4 & 5; Löbl & Smetana, 2010: 288; Jang, Lee & Choi, 2015: 305, figs.; Hwang, 2015: 362, figs.

**Distribution.** South Korea, Japan.

**Host plants.** *Acacia mearnsi* De Wildeman (MIMOSACEAE), *Acer* sp. (ACERACEAE), *Albizia julibrissin* Durazzini (MIMOSACEAE), *Alnus* sp. (BETULACEAE), *Betula japonica* Thunberg (BETULACEAE), *Cayratia japonica* Gagnepain (VITACEAE), *Ficus carica* Linné (MORACEAE), *Maackia amurensis* Ruprecht var. *buergeri* (Maximowicz) C.K. Schneider (FABACEAE), *Machilus thunbergii* Siebold & Zuccarini (LAURACEAE), *Mallotus japonicus* (Thunberg) Müller *argoviensis* (EUPHORBIACEAE), *Parabenzoin praecox* Nakai (LAURACEAE), *Prunus yedoensis* Matsumura (ROSACEAE), *Quercus glauca* Thunberg (FAGACEAE), *Quercus sessilifolia* Blume (FAGACEAE), *Rhus*

**M.-Y. Lin, S.-O. Ge**

*javanica* Linné var. *roxburghii* (de Candolle) Rehder & E.H. Wilson (ANACARDIACEAE), *Rosa multiflora* Bentham (= *microcarpa*) (ROSACEAE).

**Remarks.** The record from Taiwan appeared in Hua (2002) and was repeated by Löbl & Smetana (2010), but it wasn't included in the Taiwanese faunal books (Yu & Nara, 1988; Yu, Nara & Chu, 2002; Chou, 2004, 2008) or catalogues (Nakamura, Makihara, Saito, 1992; Nakamura *et al.*, 2014). We believe the first two reports are mistaken and this species doesn't occur in Taiwan.

***Uraecha bimaculata brevicornis* Makihara, 1980**

*Uraecha bimaculata brevicornis* Makihara, 1980: 60, figs 29, 33, 37A, 38A.

Type locality: Japan, Danjo Islands, Meshima Island. TD: KUEC.

*Uraecha bimaculata brevicornis*; Makihara, In: N. Ohbayashi & Niisato, 2007: 596, pl. 61, fig. 6; Löbl & Smetana, 2010: 288.

**Distribution.** Japan.

***Uraecha curta* Breuning, 1957**

*Uraecha curta* Breuning, 1957: 114. Type locality: Indonesia, Sumatra, Deli. Type depository: RMNH.

*Uraecha curta*; Breuning, 1961: 360.

**Distribution.** Indonesia (Sumatra).

**Host plant.** *Sarcocephalus* sp. (RUBIACEAE).

***Uraecha gilva hachijoensis* Hayashi, 1969**

*Uraecha gilva hachijoensis* Hayashi, 1969: 64. TL: Japan, Hachijo Island, Nakanogo. TD: Osaka Museum of Natural History; ex collection Masao Hayashi.

*Uraecha gilva hachijoensis*; Makihara, In: N. Ohbayashi & Niisato, 2007: 597, pl. 61, figs 8–10; Löbl & Smetana, 2010: 288.

**Distribution.** Japan.

***Uraecha gilva gilva* Yokoyama, 1966**

*Uraecha gilva* Yokoyama, 1966: 56, pl. 6, fig. 5. TL: Japan, Tokara Islands, Nakanoshima Island. TL: Osaka Museum of Natural History; ex collection Hajime Yokoyama.

*Uraecha gilva gilva*; Ohbayashi N., Kimura & Satô, 1994: 273; Makihara, In: N. Ohbayashi & Niisato, 2007: 597, pl. 61, fig. 7 Löbl & Smetana, 2010: 288.

**Distribution.** Japan.



**M.-Y. Lin, S.-Q. Ge**

***Uraecha guerryi* (Pic, 1903)**

- ? *Eryssamena Guerryi* Pic, 1903: 105. TL: China, Yunnan. TD: MNHN.  
*Eryssamena guerryi*: Gressitt, 1951: 522; Hua, 2002: 207; Hua *et al*, 2009: 455.  
*Uraecha guerryi*: Breuning, 1960a: 3; Breuning, 1961: 360; Löbl & Smetana, 2010: 288.  
*Annamanum guerryi*: Breuning, 1963: 2.  
**Distribution.** China: Yunnan.

***Uraecha laosica* Breuning, 1982**

- Uraecha laosica* Breuning, 1982: 18. TL: Laos. TD: MNHN.  
**Distribution.** Laos.

***Uraecha ochreomarmorata* Breuning, 1965**

- Uraecha ochreomarmorata* Breuning, 1965: 48, fig. page 48. TL: Laos, region de Xieng Khouang, Plaine des Jarres. TD: BPBM.  
*Uraecha ochreomarmorata*; Rondon & Breuning, 1970: 459, fig. 33 a.  
**Distribution.** Laos.

***Uraecha oshimana* Breuning, 1954**

- Uraecha oshimana* Breuning, 1954: 70, fig. 3. TL: Japan, Ryukyu Islands, Oshima Island. TD: MNHN.  
*Uraecha oshimana*; Breuning, 1961: 360; Ohbayashi N., 1964: 40; Makihara, *In*: N. Ohbayashi & Niisato, 2007: 597, pl. 61, figs 11 & 12; Löbl & Smetana, 2010: 288.  
**Distribution.** Japan.  
**Host plants.** *Celastrus orbiculatus* var. *punctatus* Rehder (CELASTRACEAE), *Rhus succedanea* Linnaeus (ANACARDIACEAE).

***Uraecha punctata* Gahan, 1888**

- Uraecha punctata* Gahan, 1888: 63. TL: China. TD: BMNH.  
*Uraecha punctata*; Breuning, 1944: 407, fig.301; Gressitt, 1951: 389; Breuning, 1961: 360; Hua *et al.*, 1993: 247, pl. XIV, fig. 215a; Wang & Chiang, 2000: 45; Hua, 2002: 235; Hua *et al*, 2009: 259, 404, pl. CXX, 1393; Löbl & Smetana, 2010: 288; Weigel *et al.*, 2013: 62, 120, pl. 38, fig. c; Lin, 2014: 138, fig. 78; Lin, 2015: 184, fig. 185-2.

**Distribution.** China: Fujian, Jiangxi, Guangdong, Hainan, Yunnan, Hongkong; Vietnam, India.

**Funding.** This research was supported by a special fiscal fund (No. 2013-19) from Shaanxi Province for “Insect fauna of Qinling Mountains Region”, a grant (No. O529YX5105) from the Key Laboratory of the Zoological Systematics and Evolution of the Chinese Academy of Sciences, the National Natural Science Foundation of China (J1210002 and 31472029), and the China Scholarship Council (CSC, File No. 201704910195).

**Acknowledgement** We are grateful to Olivier Montreuil and Gérard Tavakilian (MNHN), Xavier Gouverneur (Rennes, France), Hong Pang, Lizhong Hua, Fenglong Jia and Binglan Zhang (SYSU), Changchin Chen (CJCCC), Shepherd Myers (BPBM), Nobuo Ohbayashi (Miura City, Japan), Junsuke Yamasako (University of Tokyo, Japan), Larry Bezark (California, USA) for giving access to the collections or offering the type pictures. We thank Bin Liu for loaning the female of the new species. We wish to express our sincere thanks to Larry Bezark (California, USA) and Carolus Holzschuh (Vilach, Austria) for improving this manuscript.

#### REFERENCES

- Aurivillius C. 1913. Neue oder wenig bekannte Coleoptera Longicornia. 13. - Arkiv för Zoologi, Uppsala. 8(22): 229-263, 11 figs.
- Aurivillius C. 1922. Cerambycidae: Lamiinae I. Pars 73. - In: Schenkling S. (ed.). Coleopterorum Catalogus. Volumen XXIII. Cerambycidae II. Berlin: W. Junk. 322 pp.
- Bates H.W. 1884. Longicorn beetles of Japan. Additions, chiefly from the later collections of Mr. George Lewis; and notes on the synonymy, distribution, and habits on the previously known species. The Journal of the Linnean Society of London. Zoology 18: 205-262, pls 1-2.
- Breuning S. 1935a. Novae species Cerambycidarum. III. - Folia Zoologica et Hydrobiologica, Riga. 8: 51-71.
- Breuning S. 1935b. Description d'un nouveau Longicorne. - Bollettino della Società Entomologica Italiana, Firenze. 67(5-6): 76-77.
- Breuning S. 1936. Novae species Cerambycidarum. V. Festschrift zum 60. Geburtstag von Professor Dr. Embrik Strand, Riga. 1: 274-325.
- Breuning S. 1938. Novae species Cerambycidarum VI. Festschrift zum 60. Geburtstag von Professor Dr. Embrik Strand, Riga 4 [1937]: 180-392.
- Breuning S. 1942. Novae species Cerambycidarum XI. - Folia Zoologica et Hydrobiologica, Riga. 11: 113-175.
- Breuning S. 1944. Études sur les Lamiaires (Coleop. Cerambycidae). Douzième

**M.-Y. Lin, S.-Q. Ge**

- tribu: Agniini Thomson. - *Novitates Entomologicae*, 3ème supplément (107-135): 281-512, figs 158-305.
- Breuning S. 1947. Nouvelles formes de Longicornes du Musée de Stockholm. - *Arkiv för Zoologi, Uppsala*. 39A(6): 1-68.
- Breuning S. 1949. Notes systématiques sur les Lamières (Coleoptera Cerambycidae). - *Bulletin de l'Institut Royal des Sciences Naturelles de Belgique, Bruxelles*. 25(38): 1-32.
- Breuning S. 1950. Lamières nouveaux de la collection Lepesme. *Longicornia*. I: 511-535, 8 figs. Paul Lechevalier, Paris.
- Breuning S. 1953. Nouvelles formes de Lamières. (Quatrième partie). - *Bulletin de l'Institut Royal des Sciences Naturelles de Belgique, Bruxelles*. 29(8): 1-38, 2 pls, 27 figs.
- Breuning S. 1954. Nouveaux Lamières du Muséum national d'Histoire naturelle (1re Note) [Col. Cerambycidae]. - *Bulletin de la Société Entomologique de France, Paris*. 59: 68-73, 6 figs.
- Breuning S. 1956. Die Ostasien-Cerambyciden im Museum A. Koenig, Bonn. - *Bonner Zoologische Beiträge*. 7(1-3): 229-236.
- Breuning S. 1957. Nouveaux Lamières du Rijksmuseum van Natuurlijke Historie. - *Zoologische Mededeelingen, Leiden*. 35(9): 113-123, 3 figs.
- Breuning S. 1958. Nouveaux Lamières du Muséum national d'Histoire naturelle (3e note) [Col. Cerambycidae]. - *Bulletin de la Société Entomologique de France, Paris* 62 [1957]: 261-270, 6 figs.
- Breuning S. 1960a. Nouvelles formes de Lamières. (douzième partie). *Bulletin de l'Institut Royal des Sciences Naturelles de Belgique, Bruxelles*. 36(7): 1-30, 4 figs.
- Breuning S. 1960b. Nouveaux Longicornes du Muséum national d'Histoire naturelle (4e note) [Col. Cerambycidae]. - *Bulletin de la Société Entomologique de France, Paris*. 65(1-2): 29-36.
- Breuning S. 1961. *Catalogue des Lamières du Monde*. Verlag des Museums G. Frey, Tutzing bei München. (5): 287-382.
- Breuning S. 1962. Contribution à la connaissance des Lamiens du Laos ( collection Céramb ) Troisième partie. - *Bulletin de la Société Royale des Sciences Naturelles du Laos*. 4(3): 14-26, 17 figs.
- Breuning S. 1963. Nouvelles formes de Lamières (Quinzième partie). *Bulletin de l'Institut Royal des Sciences Naturelles de Belgique, Bruxelles*. 39(34): 1-11, 3 figs.
- Breuning S. 1965. Contribution à la connaissance des Lamiens du Laos (Coll. Céramb.) 13ème Partie. - *Bulletin de la Société Royale des Sciences Naturelles du Laos*. 14: 31-62, 40 figs.
- Breuning S. 1966. Nouvelles formes de Lamières (dix-septième partie). *Bulletin de l'Institut Royal des Sciences Naturelles de Belgique, Bruxelles*. 42(21): 1-22.
- Breuning S. 1969. Nouveaux Coléoptères Cerambycidae Lamiinae des collections du Muséum de Paris. - *Bulletin du Muséum National d'Histoire Naturelle de Paris (2ème série)*. 41(1): 187-199.
- Breuning S. 1970. Descriptions de nouveaux Lamiinae de la collection Chassot (Coleoptera Cerambycidae). - *Bulletin de la Société Entomologique de*

**M.-Y. Lin, S.-Q. Ge**

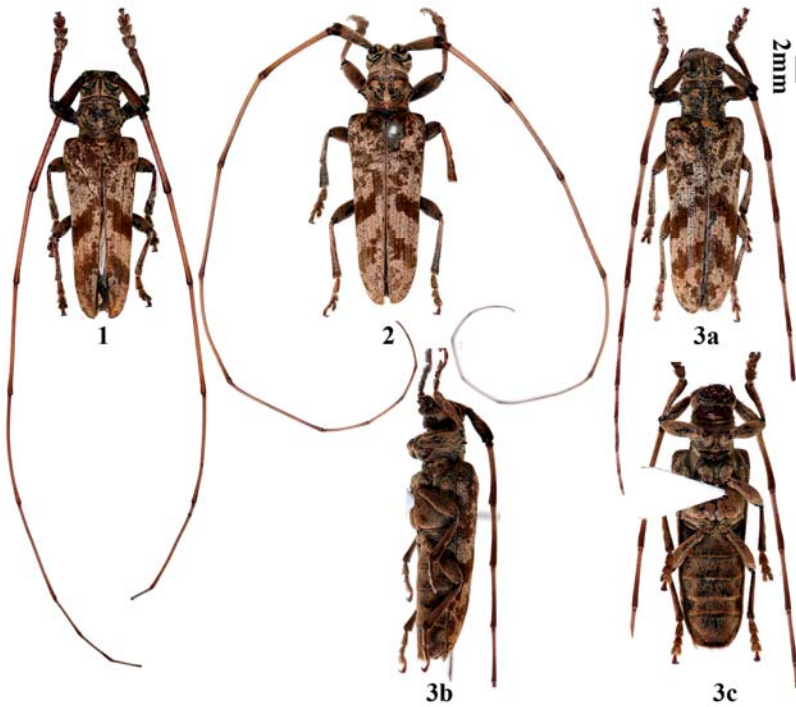
- Mulhouse [novembre-décembre 1970]: 87-90.
- Breuning S. 1979. Nouveaux Coléoptères Cerambycidae Lamiinae des collections du Muséum de Paris (1re note). - Revue Française d'Entomologie, Paris (N. S.). 1(2): 99-100.
- Breuning S. 1982. Diagnoses préliminaires de nouveaux Lamiinae du Muséum National d'Histoire Naturelle de Paris [Coleoptera, Cerambycidae]. - Annales de la Société Entomologique de France, Paris (N. S.). 18(1): 9-29.
- Chiang S.N. 1951. Longicorn Beetles of Kwangsi and Kweichow Provinces of China. - Peking Natural History Bulletin. 20(1): 1-100, 2 pls.
- Chiang S.N., Pu F.J., Hua L.Z. 1985. Economic insect fauna of China Vol. XXXV Coleoptera: Cerambycidae (Third). Beijing, Science Press. 189 pp.
- Chou W-I. 2004. Iconography of longhorn beetles in Taiwan. Owl Press, Taipei, 408 pp.
- Chou W-I. 2008. Iconography of longhorn beetles in Taiwan (second edition). Owl Press, Taipei, 408 pp.
- Gahan C.J. 1888. IX. On new Longicorn Coleoptera from China. - The Annals and Magazine of Natural History, London. 6(2) 7: 59-67.
- Gahan C.J. 1894. Viaggio di Leonardo Fea in Birmania e Regioni vicine. LVI. A list of the Longicorn Coleoptera collected by Signor Fea in Burma and the adjoining regions, with descriptions of the new Genera and species. Annali del Museo Civico di Storia Naturale, Genova (Série 2) 14: 5-104, 1 pl.
- Gressitt J.L. 1938. New longicorn beetles from China, VI (Coleoptera: Cerambycidae). - Lingnan Science Journal. 17: 151-159.
- Gressitt J.L. 1939. A collection of longicorn beetles from T'ien-Mu Shan, East China (Coleoptera: Cerambycidae). - Notes d'Entomologie Chinoise. 6: 81-133, pls 1-3.
- Gressitt J.L. 1942a. New longicorn beetles from China, X (Coleoptera: Cerambycidae). Special Publication of the Lingnan - Natural History Survey & Museum. 7: 1-11, 1 pl.
- Gressitt J.L. 1942b. Second supplement to "A study of the Longicorn Beetles of Kwangtung Province, S. China" (Coleoptera: Cerambycidae). - Lingnan Science Journal 20 (2-4): 205-224, pl. 8.
- Gressitt J.L. 1951. Longicornia Volume II: Longicorn Beetles of China. Paul Lechevalier, Paris, France, 667 pp, 22 pls.
- Hayashi M. 1969. Studies on Cerambycidae from Japan and its Adjacent Regions (Col.), XVII. - The Entomological Review of Japan. 21(2): 61-66.
- Hua L.-Z. 1987. New Records of Longicorn Beetles from China, with Description of a New Species of *Phelipara* (Coleoptera: Cerambycidae). - Bishop Museum Occasional Papers. 27: 90-96, 1 fig.
- Hua L.-Z. 2002. List of Chinese Insects Vol. II. Zhongshan (Sun Yat-sen) University Press, Guangzhou. 612 pp.
- Hua, L.-Z., Nara H., Yu C.-K. 1993. Longicorn Beetles of Hainan and Guangdong. Muh-Sheng Museum of Entomology, Taichung. 320 pp.
- Hua L.-Z., Nara H., Samuelson G.A., Lingafelter, S.W. 2009. Iconography of Chinese Longicorn Beetles (1406 species) in Color. Sun Yat-sen University Press, Guangzhou. 474 pp., 125 pls.

**M.-Y. Lin, S.-O. Ge**

- Hwang S. H. 2015. Long-horned beetles in Korea. Nature & Ecology, Seoul. 551 pp.
- Jang H.K., Lee S.H., Choi W. 2015. *Cerambycidae of Korea*. Geobook, Seoul. 399 pp.
- Lacordaire J.T. 1869. Histoire naturelle des insectes. Genera des coléoptères, ou exposé méthodique et critique de tous les genres proposés jusqu'ici dans cet ordre d'insectes. Tome neuvième. Première partie. Paris: Librairie encyclopédique de Roret. 409 pp.
- Lee S.M. 1987. The Longicorn Beetles of Korea Peninsula. - National Science Museum, Seoul, Korea. 287 pp.
- Lingafelter S.W., Hoebeke R.E. 2002. Revision of the Genus *Anoplophora* (Coleoptera: Cerambycidae). The Entomological Society of Washington, Washington D.C. 236 pp, 67 figs, 34 pls, 14 cartes.
- Lin M.-Y. 2014. Some new localities of Chinese longhorn beetles (Coleoptera, Cerambycidae). Les Cahiers Magellanes, NS. 16: 110-150.
- Lin M.-Y. 2015. A Photographic Guide to Longhorn Beetles of China. Chongqing: Chongqing University Publishing house. 227 pp.
- Löbl I., Smetana A. 2010. Catalogue of Palaearctic Coleoptera. Volume 6 Chrysomeloidea. I. Löbl & A. Smetana editors, Apollo books, Stenstrup. 6. 924 pp.
- Makihara H. 1980. Cerambycidae of the Danjo Islands, with descriptions of two new species and six new subspecies (Coleoptera). Esakia, Fukuoka. (15): 49-73, 69 figs.
- Matsushita M. 1933. Beitrag zur Kenntnis der Cerambyciden des japanischen Reichs. Journal of the Faculty of Agronomy of Hokkaido Imperial University, Sapporo. 34(2): i-ix + 157-445, 5 pls.
- Matsushita M. 1935. Bemerkungen zu den japanischen Cerambyciden nebst Beschreibung einiger neuer Arten. Transactions of the Natural History Society of Formosa. 25: 308-313, 1 fig.
- Nakamura S., Makihara H., Kurihara T. & Yamasako J. 2014. Check-list of Longicorn-beetles of Taiwan. - Miscellaneous Reports of the Hiwa Museum for Natural History, Shobara. (55): 1-277.
- Nakamura S., Makihara H. & Saito A. 1992. Check-list of Longicorn-Beetles of Taiwan. - Miscellaneous Reports of the Hiwa Museum for Natural History, Shobara. (33): 1-111.
- Niisato T. 1994. Collecting Records of Cerambycid Beetles (Coleoptera, Cerambycidae) from Shikine-jima of the Izu Islands. Elytra, Tokyo. 22(1): 158.
- Ohbayashi N. 1964. A List of Cerambycidae from the Tokara and the Amami Islands (Coleoptera). - Reports of the Scientific Researches to the Tokara and the Amami Islands of the Ehime University. 1: 37-43, pl. 17.
- Ohbayashi N., Kimura M., Satô M. 1994. The Cerambycid Fauna of the Tokara Island. - In: The Insects Fauna of the Tokara Islands of the Ryukyu Archipelago, WWF Japan Science Report. 2(2): 251-309, 5 pls.
- Ohbayashi N., Niisato T. 2007. Longicorn Beetles of Japan. Tokai University Press, Kanagawa: v-xii + 818 pp., 22 figs, 130 pls couleur.
- Pascoe F.P. 1857. Descriptions of New Genera and Species of Asiatic Longicorn Coleoptera. - The Transactions of the Entomological Society of London (New

**M.-Y. Lin, S.-O. Ge**

- Series). (2)4(3): 42-50, pl. XVI.
- Pic M. 1903. Diagnoses préliminaires de Longicornes provenant de Chine. - L'Échange, Revue Linnéenne. 19(219): 105.
- Pic M. 1925. Nouveautés diverses. - Mélanges Exotico-Entomologiques. 43: 1-32.
- Pic M. 1934. Nouveautés asiatiques. - Matériaux pour servir à l'étude des Longicornes. 11(3): 33-40.
- Pu F. J. 1980. Economic insect fauna of China Vol. XIX. Coleoptera: Cerambycidae (Second). Beijing, Science Press. 1-146.
- Pu F.-J. 1991. New genus and species of Cerambycinae, with new records of Longicorn Beetles from China (Coleoptera: Cerambycidae). - Sinozoologia. 8: 247-252, 5 figs.
- Pu F.-J. 1992. Insects of the Hengduan Mountains Region, Volume 1. The Comprehensive Scientific Expedition to the Qinghai-Xizang Plateau. Coleoptera: Disteniidae and Cerambycidae. Science Press, Beijing, 5: xii + 865 pp.
- Rondon J.A., Breuning S. 1970. Lamiines du Laos. Pacific Insects Monograph. 24: 315-571, 54 figs.
- Tavakilian G., Chevillotte H. 2017. Titan: base de données internationales sur les Cerambycidae ou Longicornes. Available from: - URL: <http://titan.gbif.fr/> [accessed on Sept. 14, 2017]
- Thomson J. 1864. Systema Cerambycidarum ou exposé de tous les genres compris dans la famille des Cérambycides et familles limitrophes. Mémoires de la Société Royale des Sciences de Liège. 19: 1-540.
- Ulmen K., Newzella R., Hubweber L., Schmitt M., Klug T, Ahrens D., 2010. Contribution to a catalogue of types preserved in the collection of Zoologisches Forschungsmuseum Alexander Koenig (ZFMK): Coleoptera: 1. Checklist of taxa. - Bonn zoological Bulletin. 58: 5-48.
- Wang Q., Chiang S.-N. 1988. Studies on the cerambycid fauna of Wolong Nature Reserve, Sichuan, and its origin and evolution. - Entomotaxonomia. 10(1-2): 131-146.
- Wang W.-K., Chiang S.-N. 2000. Taxonomic Study on the Chinese *Uraecha* Thomson (Coleoptera: Cerambycidae: Lamiinae). - Entomotaxonomia. 22(1): 45-47, figs 1-4.
- Weigel A. 2006. Checklist and Bibliography of Longhorn Beetles from Nepal (Insecta: Coleoptera: Cerambycidae). - In Matthias Hartmann & J. Weipert (Editors). Biodiversität und Naturlausstattung im Himalaya II. Verein der Freunde und Förderer des Naturkundemuseums Erfurt e. V.: 495-510.
- Weigel A., Meng L.-Z., Lin M.-Y. 2013. Contribution to the Fauna of Longhorn Beetles in the Naban River Watershed National Nature Reserve. Formosa Ecological Company, Taiwan. 219 pp.
- Yokoyama H. 1966. The Cerambycidae from Ryukyu and Satsunan Islands, I. (Coleoptera). The Entomological Review of Japan. 18(2): 54-59, pl. 6.
- Yu C.-K. & Nara H. 1988. The Longicorn beetles of Taiwan. - Muh-Sheng Museum of Entomology, Taiwan, 112 pp.
- Yu C.-K., Nara, H., Chu Y.-I. 2002. The Longicorn beetles of Taiwan (new edition). Muh-Sheng Museum of Entomology, Taiwan. 151 pp.



**Figures 1-3.** *Annamanum wenzhui* sp. nov., habitus. 1. holotype, male, from China, Shaanxi. 2. Paratype, male, from China, Hubei. 3. paratype, female, from China, Henan; a. Dorsal view. b. Lateral view. c. ventral view. Scale 2 mm.

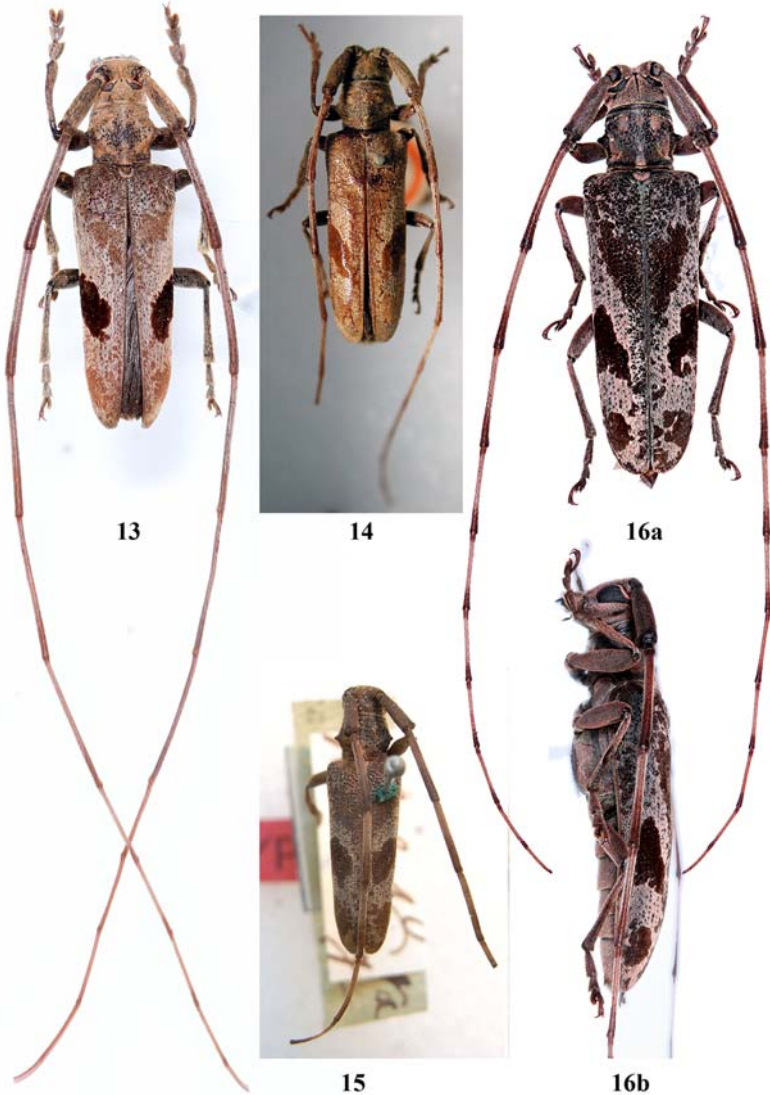


**Figures 4-9.** Terminalia of *Annamanum wenzhui* sp. nov., male from China. 4-5. holotype, IOZ(E)2002898. 6-9. paratype, IOZ(E)2002899. 4. Tergite VIII and sternites VIII & IX. 5. male genitalia. 6. tergite VIII. 7. Spiculum gastrale (= sternite IX) 8. Tegmen. 9. Median lobe with median struts. a. Ventral view, b. Lateral view, c. Dorsal view. Scale 1 mm.

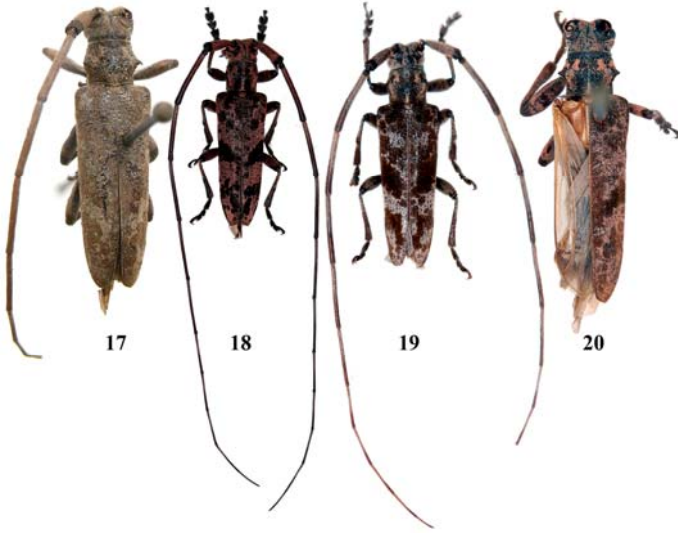




**Figures 10-12.** *Annamanum lunulatum* (Pic, 1934), habitus. 10. holotype, female, from Vietnam, Tonkin, Chapa, photographed by X. Gouverneur. 11. holotype of *Uraecha longzhouensis* Wang & Chiang, 2000, male, from China, Guangxi, photographed by G.-L. Xie. 12. male, from China, Yunnan. Not to scale.



**Figures 13-16.** *Uraecha angusta* (Pascoe, 1857), habitus. 13. male, from China, Shaanxi. 14. holotype of *Uraecha angusta* (Pascoe, 1857), female, from China Borealis, photographed by Larry Bezark. 15. holotype of *Uraecha attenuata* Pic, 1925, female, from China, Tibet, photographed by X. Gouverneur. 16. female, from China, Guangxi. a. dorsal view. b. lateral view. Not to scale.



**Figures 17-20.** *Uraecha* spp. Habitus. 17-19. *Uraecha chinensis* Breuning, 1935. 17. holotype, male, China, Hebei, photographed by X. Gouverneur. 18. male, from China, Beijing. 19. male, from China, Shaanxi. 20. *Uraecha obliquefasciata* Chiang, 1951, holotype, female, from China, Guizhou, photographed by Junsuke Yamasako & Nobuo Ohbayashi. Not to scale.



**Figures 21-22.** *Uraecha yunnana* Breuning, 1936, habitus. 21. holotype of *Uraecha yunnana* Breuning, 1936, female, from China, Yunnan, photographed by X. Gouverneur. 22. holotype of *Uraecha perplexa* Gressitt, 1942, male, from China, Sichuan, photographed by W.-X. Bi. Not to scale.

Received: 13.10.2017

Accepted: 16.10.2017