

This article was downloaded by: [National Science Library]

On: 01 April 2015, At: 23:21

Publisher: Taylor & Francis

Informa Ltd Registered in England and Wales Registered Number: 1072954 Registered office: Mortimer House, 37-41 Mortimer Street, London W1T 3JH, UK



## Journal of Natural History

Publication details, including instructions for authors and subscription information:

<http://www.tandfonline.com/loi/tnah20>

### Taxonomy of the genus *Gabrius* Stephens, 1829 (Coleoptera: Staphylinidae: Philonthina) from China, with description of two new species

Liang Li <sup>a b</sup>, Harald Schillhammer <sup>c</sup> & Hong-Zhang Zhou <sup>b</sup>

<sup>a</sup> College of Life Science, Hebei Normal University, 113 Yuhua East Rd., Yuhua District, 050016, Shijiazhuang, Hebei Province, PR China

<sup>b</sup> Key Laboratory of Zoological Systematics and Evolution, Institute of Zoology, Chinese Academy of Sciences, 1 Beichen West Rd., Chaoyang District, 100101, Beijing, PR China

<sup>c</sup> Natural History Museum Vienna, International Research Institute for Entomology, Burgring 7, A-1010, Wien, Austria

Published online: 07 Mar 2012.

To cite this article: Liang Li, Harald Schillhammer & Hong-Zhang Zhou (2012) Taxonomy of the genus *Gabrius* Stephens, 1829 (Coleoptera: Staphylinidae: Philonthina) from China, with description of two new species, *Journal of Natural History*, 46:15-16, 955-967, DOI: [10.1080/00222933.2012.654476](https://doi.org/10.1080/00222933.2012.654476)

To link to this article: <http://dx.doi.org/10.1080/00222933.2012.654476>

PLEASE SCROLL DOWN FOR ARTICLE

Taylor & Francis makes every effort to ensure the accuracy of all the information (the "Content") contained in the publications on our platform. However, Taylor & Francis, our agents, and our licensors make no representations or warranties whatsoever as to the accuracy, completeness, or suitability for any purpose of the Content. Any opinions and views expressed in this publication are the opinions and views of the authors, and are not the views of or endorsed by Taylor & Francis. The accuracy of the Content should not be relied upon and should be independently verified with primary sources of information. Taylor and Francis shall not be liable for any losses, actions, claims, proceedings, demands, costs, expenses, damages, and other liabilities whatsoever or howsoever caused arising directly or indirectly in connection with, in relation to or arising out of the use of the Content.

This article may be used for research, teaching, and private study purposes. Any substantial or systematic reproduction, redistribution, reselling, loan, sub-licensing, systematic supply, or distribution in any form to anyone is expressly forbidden. Terms & Conditions of access and use can be found at <http://www.tandfonline.com/page/terms-and-conditions>

## Taxonomy of the genus *Gabrius* Stephens, 1829 (Coleoptera: Staphylinidae: Philonthina) from China, with description of two new species

Liang Li<sup>a,b</sup>, Harald Schillhammer<sup>c</sup> and Hong-Zhang Zhou<sup>b\*</sup>

<sup>a</sup>College of Life Science, Hebei Normal University, 113 Yuhua East Rd., Yuhua District, 050016 Shijiazhuang, Hebei Province, PR China; <sup>b</sup>Key Laboratory of Zoological Systematics and Evolution, Institute of Zoology, Chinese Academy of Sciences, 1 Beichen West Rd., Chaoyang District, 100101 Beijing, PR China; <sup>c</sup>Natural History Museum Vienna, International Research Institute for Entomology, Burggring 7, A-1010 Wien, Austria

(Received 1 April 2011; final version received 2 January 2012; printed 28 February 2011)

In this paper, two new species of the genus *Gabrius* from China are described and illustrated: *G. zhoui* sp. nov. from Sichuan and *G. invisus* sp. nov. from Beijing, Hubei, Hunan, Henan, Shaanxi, Sichuan and Zhejiang. *Gabrius imitator* (Fauvel, 1895), *G. lebedevi* (Bernhauer, 1910), *G. tirolensis* (Luze, 1903), *G. kambaitiensis* Scheerpeltz, 1965, *G. cinctiventris* Scheerpeltz, 1965, *G. egens* (Sharp, 1874), *G. smetanai* Schillhammer, 1997 and *G. zerchei* Schillhammer, 1996 are reported from China for the first time. Thus, a total of 53 species of the genus *Gabrius* are known from China.

**Keywords:** Staphylininae; Philonthina; *Gabrius*; new species; China

### Introduction

With more than 350 described species worldwide, the genus *Gabrius* Stephens, 1829 is one of the largest groups in the subtribe Philonthina (Staphylinidae: Staphylininae: Staphylinini) (Herman 2001; Assing 2004, 2009; Hromadka 2007; Schillhammer 2000, 2001, 2004, 2007; Shibata 2007; Chani-Posse 2009; Li et al. 2010). Of all these species, only 43 species had been reported to occur in China (Herman 2001; Schillhammer 2001; Shibata 2007; Smetana 2004; Li et al. 2010). In this paper, two new species of the genus *Gabrius* from China are described and illustrated: *G. zhoui* sp. nov. from Sichuan and *G. invisus* sp. nov. from Beijing, Hubei, Hunan, Henan, Shaanxi, Sichuan and Zhejiang. *Gabrius imitator* (Fauvel, 1895), *G. lebedevi* (Bernhauer, 1910), *G. tirolensis* (Luze, 1903), *G. kambaitiensis* Scheerpeltz, 1965, *G. cinctiventris* Scheerpeltz, 1965, *G. egens* (Sharp, 1874), *G. smetanai* Schillhammer, 1997 and *G. zerchei* Schillhammer, 1996 are reported from China for the first time. Thus, a total of 53 species of the genus *Gabrius* are known from China.

### Materials and methods

For dissection, specimens were relaxed in warm water (60–70°C) for about 7–10 hours, then cleared in 10% KOH for 5 minutes, and transferred in 75% alcohol. Cleared

---

\*Corresponding author. Email: zhouhz@ioz.ac.cn

specimens were dissected to observe morphological details of the eighth–10th abdominal segments and male aedeagus. After examination, the body parts were stored permanently in glycerin for future studies. Observation and drawing were done under a compound microscope (Zeiss).

This study was based on material deposited in the following collections: BMNH (The Natural History Museum, London; Roger Booth); CRL (Guillaume de Rougemont collection, London, UK); CSB (Michael Schülke collection, Berlin, Germany); CSO (Aleš Smetana collection, Ottawa, Canada); IZ-CAS (Institute of Zoology, Chinese Academy of Sciences, Beijing, China); and NMW (Naturhistorisches Museum, Wien, Austria)

The following abbreviations are used in the text with the measurements in millimetres (mm):

- AW Abdomen width (the width of the abdomen at its widest point)
- BL Body length (from the anterior margin of the head to the posterior margin of styli of tergite IX)
- CEL Eyes length (from the anterior margin to the posterior margin of the eyes, viewed from above)
- EL Elytron length (from the anterior margin to the posterior margin of the elytron)
- EW Width of both elytra combined (the width of the elytra at their widest point)
- HL Head length (from the anterior margin of the head to the posterior margin of tempora, labrum and mouthparts not included)
- HPL Head and pronotum length, combined (from the anterior margin of the head to the posterior margin of pronotum, neck included)
- HW Head width (the width of the head at its widest point, eyes included)
- PL Pronotum length (from the anterior margin to the posterior margin of the pronotum)
- PW Pronotum width (the width of the pronotum at its widest point)
- TL Tempora length (in dorsal view, from the posterior margin of the eyes to an imaginary line going through the points where the tempora meet the neck)

## Taxonomy

*Gabrius astutus* group

*Gabrius zhoui* sp. nov.

(Figure 1A–F)

### *Type material*

*Holotype*: male, China: Sichuan: Baoxing: Fengtongzhai, 7 June 1997, leg. Zhou Haisheng (IZ-CAS). *Paratype*: one female, Sichuan: same data as holotype (IZ-CAS).

### *Description*

Head black, shining. Pronotum, elytra, scutellum and antennae reddish brown. Abdomen black with posterior margin of each tergite markedly reddish brown. Mandibles, maxillary and labial palpi and legs reddish brown.

Body 5.79–5.96 mm long (HPL = 1.63–1.71 mm). Head of rounded quadrangular shape, 0.73–0.82 mm long, 0.65 mm wide (HW:HL = 0.80–0.89). Tempora 0.33 mm

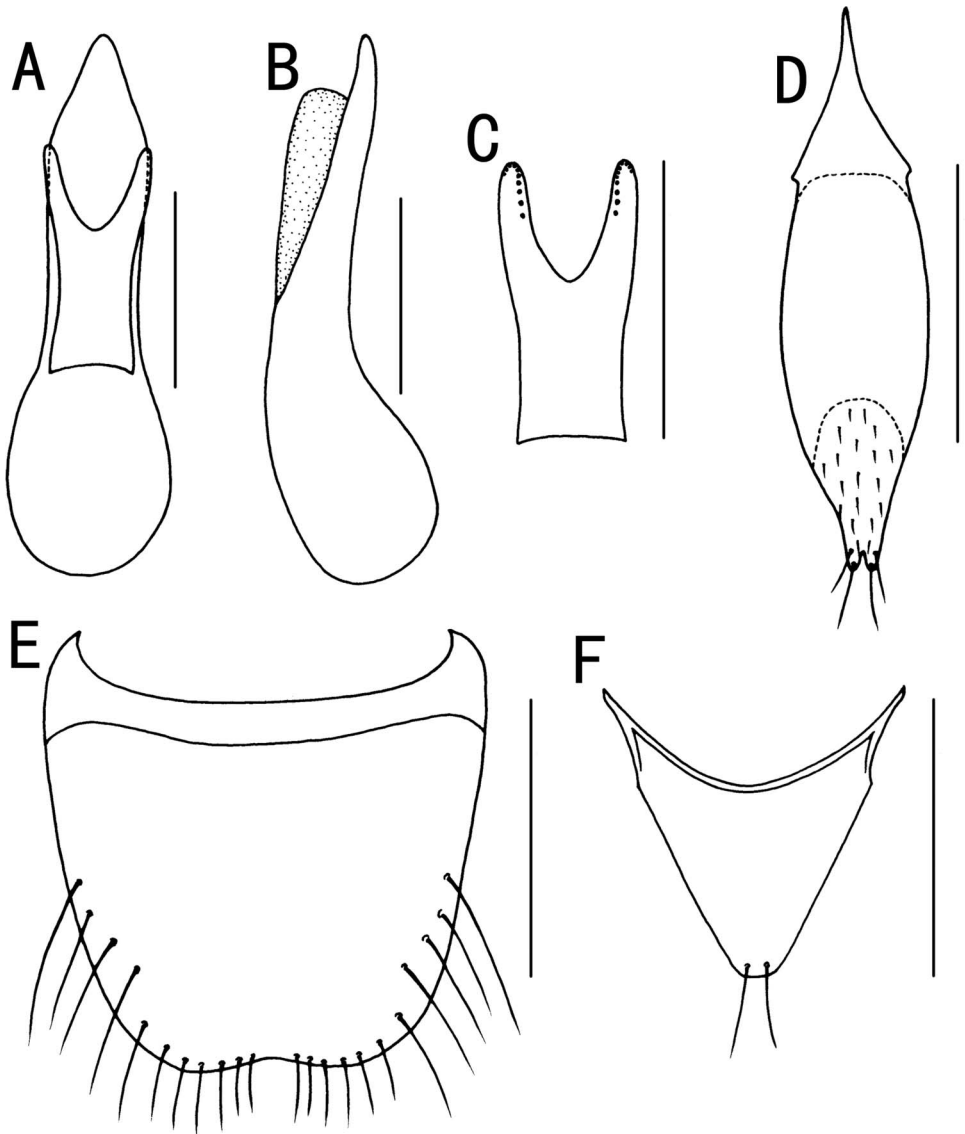


Figure 1. *Gabrius zhoui* sp. nov. (A) aedeagus, ventral view; (B) median lobe of aedeagus (paramere removed), lateral view; (C) underside of paramere; (D) sternite IX of male; (E) sternite VIII of male; (F) tergite X of male. Scale bars 0.5 mm.

long, almost evenly rounded, sparsely and coarsely punctate; eyes small, slightly protruding, 0.16–0.25 mm long, 0.50–0.75 times as long as tempora. Dorsal surface of head with scattered, large setiferous punctures along lateral sides, vertex largely impunctate; entire head with distinct and profound microsculpture of transverse waves. Antennae short, first segment long, slightly thickened towards apex, third segment slightly longer than second, fourth–fifth segments almost as long as wide, sixth–10th segments distinctly transverse, last segment longer than wide, obliquely truncated.

Pronotum slightly narrowed posteriad, 0.82–0.90 mm long, 0.82–0.90 mm wide, slightly wider than head (PW:HW = 1.25–1.38); dorsal rows each with six punctures, sublateral rows each with two punctures; microsculpture similar to that on head.

Elytra 0.98 mm long along sides, 1.14 mm wide, 1.09–1.20 times as long as pronotum, sparsely and largely punctate, punctures separated by 3–4 times their diameter. Scutellum large, triangular, sparsely and finely punctate and pubescent.

Abdomen slightly narrowed posteriad, widest 1.06–1.14 mm, finely and sparsely punctate, punctures separated by 5–6 times their diameter at base, gradually becoming sparser toward apex of each tergite; surface between punctures with exceedingly fine and dense microsculpture of transverse striae; tergites III–V with two basal lines, elevated area between basal lines almost impunctate.

*Male.* Sternite VIII with wide and shallow medioapical emargination (Figure 1E). Sternite IX largely membranous at medial portion, basal portion short and narrow, almost symmetrical, apical portion long with slightly emarginate, pubescent apex (Figure 1D). Tergite X simple, triangular, with subtruncated apex, bearing two long apical setae (Figure 1F).

Aedeagus moderately large; median lobe with apical portion evenly narrowed into obtusely acute apex (Figure 1A); in lateral view, apical portion of median lobe slightly bent dorsad (Figure 1B); paramere divided into two moderately wide and long branches, face adjacent to median lobe with sensory peg setae closely arranged along latero-apical margin of each branch (Figure 1C).

*Female.* Sternite VIII subrounded at apex, without medioapical emargination. Tergite X triangular, subrounded at apex.

#### *Etymology*

The species is named in honour of its collector Mr Zhou Haisheng.

#### *Distribution*

The species is at present known only from China (Sichuan).

#### *Remarks*

*Gabrius zhoui* sp. nov. is similar to *G. submolestus* Schillhammer, 2001 in having pronotum, elytra and antennae dark brown or reddish brown and abdomen black with posterior margin of each tergite reddish brown. *Gabrius zhoui* sp. nov. differs from *G. submolestus* by slightly wider apical portion of median lobe, narrower branches of paramere and many more sensory peg setae on underside of paramere.

***Gabrius lebedevi*** (Bernhauer, 1910); first record from China

Bernhauer 1910, p. 72 (*Philonthus*, subgenus *Gabrius*, type locality: Ala-Tau, Syr Darja).

Smetana 1973, p. 134 (*Gabrius*, characters, notes).

Coiffait 1974, p. 79 (*Gabrius*, characters, Turkestan, Uzbekistan).

Herman 2001, p. 2632 (*Gabrius*, world catalogue).

Schillhammer 2003, p. 354 (*Gabrius*, characters, Kyrgyzstan, Afghanistan).  
Smetana 2004, p. 635 (*Gabrius*, catalogue for Palaearctic region).

*Examined material*

One male, China: Sichuan: Baoxing: Fengtongzhai, 7 June 1997, leg. Zhou Haisheng (IZ-CAS); one male, one female, Sichuan: Luding: Daqiaoshan, 2555 m, 20 May 2009, leg. Liang Hongbin (IZ-CAS).

*Distribution*

China (Sichuan), Tadjikistan, Uzbekistan, Kyrgyzstan, Afghanistan.

***Gabrius tirolensis*** (Luze, 1903); first record from China

Luze 1903, p. 386 (*Philonthus*, subgenus *Gabrius*, type locality: Osttirol, Taufers, 850 m Seehöhe).

Coiffait 1951, p. 107, 114 (*Gabrius*, characters in key, France).

Smetana 1953, p. 178 (*Gabrius*, Bavaria, Savinian Alps, Croatia).

Coiffait 1974, p. 81 (*Gabrius*, characters, Alps, Pyrenees).

Herman 2001, p. 2659 (*Gabrius*, world catalogue).

Schillhammer 2003, p. 355 (*Gabrius*, illustration of aedeagus).

Smetana 2004, p. 637 (*Gabrius*, catalogue for Palaearctic region).

*Examined material*

One male, one female, China: Xinjiang: Tuomuertai, 2400 m, 3 July 1977, leg. Li Changjiang (IZ-CAS); one female, Qinghai: Dulansi [Iamamsery] (37°00.7–02.0' N, 98°37.4–37.5' E), 3245–3730 m, 10 July 2005, leg. J. Hájek, D. Král & J. Ružička [Ch 16], individually under stones, in excrements and on vegetation along the mountain stream above the monastery, pasture and coniferous forest (CSB).

*Distribution*

China (Xinjiang, Qinghai), Uzbekistan, Europe.

***Gabrius cinctiventris*** group

***Gabrius invisus*** sp. nov.

(Figure 2A–I)

*Type material*

Holotype: male, China: Beijing: Xiaolongmen: Nangou, 1140–1270 m, 21–22 September 2001, leg. Yu Xiaodong (IZ-CAS). Paratypes: three males, nine females, same data as holotype (IZ-CAS); one male, CHINA: Beijing: Mentougou: Liyuanling, 13–16 May 2000, leg. Yu Xiaodong (IZ-CAS); one male, two females, Beijing: Mentougou: Liyuanling, 18–21 July 1999, leg. Luo Tianhong (IZ-CAS); one male, four females, Beijing: Badaling, 9 September 1980 [B.M.1980-491, P.M. Hammond (4 BMNH, 1 NMW)]; five males, six females, Beijing: Xiaolongmen, 25–29 June 1995, leg. G. de Rougemont (nine CRL, two NMW); one male, two females, Beijing: Songshan, 14 May 1993, leg. G. de Rougemont (CRL); one female, Beijing: Huangsangyu, 9 May 1995, leg. G. de Rougemont (CRL); two males, four females, China: Zhejiang: Lin'an: Qianqingtang, 1100 m, 6 August 2008,

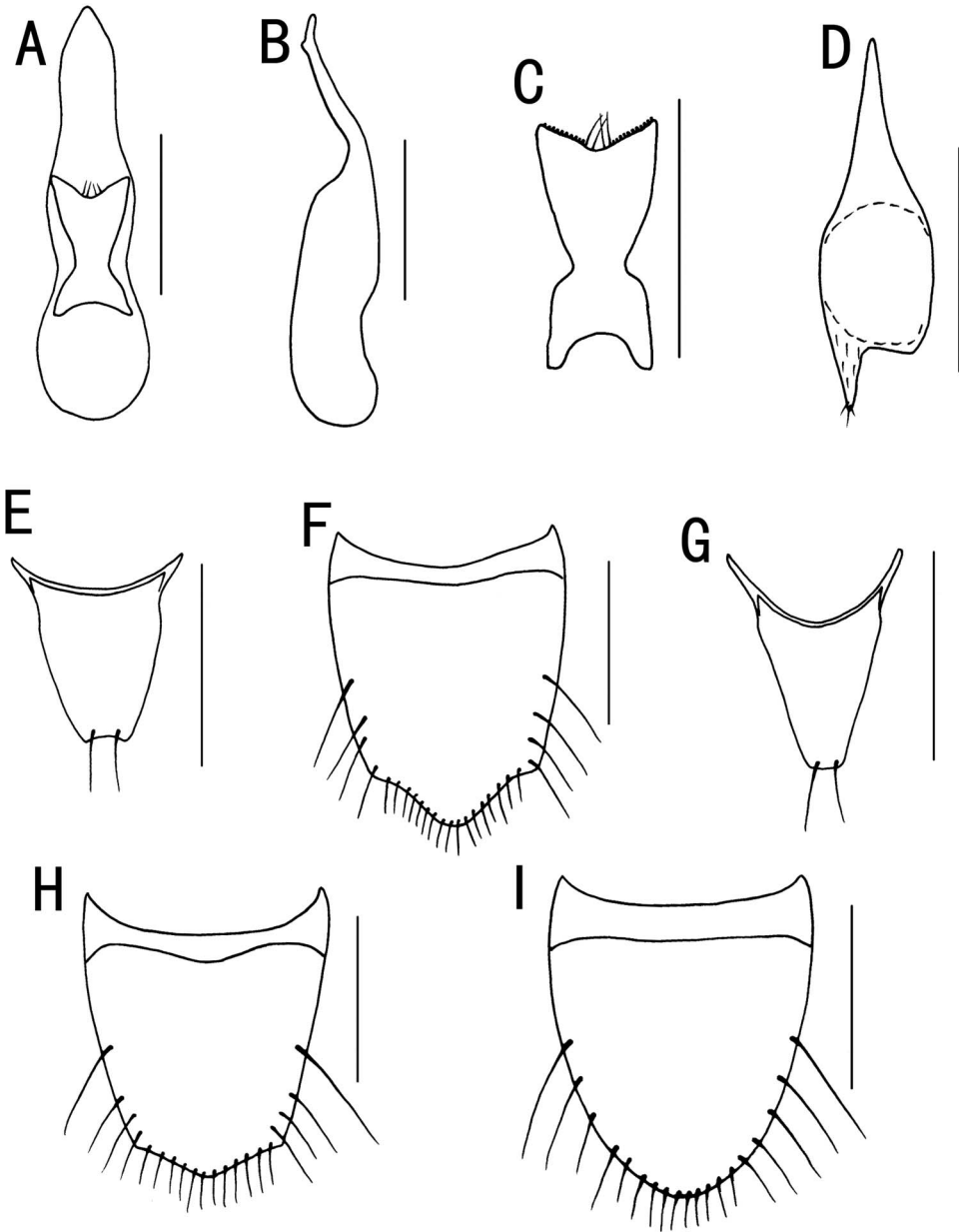


Figure 2. *Gabrius invisus* sp. nov. (A) aedeagus, ventral view; (B) median lobe of aedeagus (paramere removed), lateral view; (C) underside of paramere; (D) sternite IX of male; (E) tergite X of female; (F) tergite VIII of male; (G) tergite X of male; (H) tergite VIII of female; (I) sternite VIII of female. Scale bars 0.5 mm.



leg. Zhou Yulingzi (IZ-CAS); four males, seven females, Zhejiang: Fengyangshan, 1250–1450 m, 2–4 August 2008, leg. Zhou Yulingzi (IZ-CAS); one male, Zhejiang: Fengyangshan, 1400 m, 28–31 July 2007, leg. Zhao Zongyi (IZ-CAS); one female, Lin'an Co., W Tinamu Shan N.R., 300 m, 22 May 1996, leg. J. Cooter, Cryptomeria, Liriodendron dominant forest, Leaf litter, Winkler extractor (CRL); five males, Zhejiang: Tienmushan, 29 April 1993, leg. G. de Rougemont (CRL); 11 males, seven females, Zhejiang: Tienmushan, 2 September 1994, leg. G. de Rougemont (16 CRL, 2 NMW); eight males, 12 females, Anji Co., Longwangshan N.R., ca. 400 m, 14 May 1996, leg. J. Cooter, flight intercetion trap (18 CRL, 2 NMW); three females, China: Shaanxi: ca. 20 mi. S Xi'an, Nan Wutai, 19 September 1980 [B.M.1980–491, P.M. Hammond (BMNH)]; one male, Shaanxi: Qinlingshan above Houzhenzi, 115 km WSW Xi'an (33°47' N, 107°47' E), 1450 m, 5 July 2001, leg. A. Smetana [C95b] (CSO); one male, Shaanxi: Qinlingshan, pass on road Zhouzhi-Foping, 105 km SW Xi'an, N-slope, (33°44' N, 107°59' E), 1990 m, small creek valley, mixed dec. forest, bamboo, small meadows, 2–4 July 2001, leg. D. Wrase [01] (CSB); one female, Shaanxi: Qinlingshan, pass on road Zhouzhi-Foping, 105 km SW Xi'an, N-slope (33°46' N, 107°58' E), 1990 m, 3 July 2001, leg. M. Schülke [C01-02], small creek valley, mixed dec. forest, moss, sifted (CSB); three males, two females, Shaanxi: Nan Wutai, 17 September 1995, leg. G. de Rougemont (4 CRL, 1 NMW); one female, Shaanxi: Qinlingshan (34°00' N 108°30' E), riv. vall. 30 km SSW Xi'an, autoroute 33 km, env. source, 600 m, 31 August 1995, leg. D. Wrase (CSB); one female, Shaanxi: Qinlingshan (34°00' N 108°30' E), riv. vall. 30 km SSW Xi'an, autoroute 33 km, 600 m, sifted, 31 August 1995, leg. M. Schülke (CSB); one female, Shaanxi: Qinlingshan (34°00' N 108°30' E), riv. vall. 30 km SSW Xi'an, autoroute 33 km, 600 m, sifted, 31 August 1995, leg. A. Pütz (CSB); four males, one female, Shaanxi: Huashan, N-valley, 118 km E Xi'an, 1200–1400 m, sifted, 18/20 August 1995, leg. M. Schülke (4 CSB, 1 NMW); one male, two females, Shaanxi: Huashan, N-valley, 118 km E Xi'an, 1200–1400 m, sifted, 18–20 August 1995, leg. A. Pütz (2 CSB, 1 NMW); two males, two females, border Shaanxi-Sichuan, Dabashan, pass 20 km SSE Zhenping, 1700–1800 m (31°44' N, 109°35' E), 9 July 2001, leg. A. Smetana [C96a] (3 CSO, 1 NMW); two males, 11 females, same but [C96b] (12 CSO, 1 NMW); four males, two females, same but 12 July 2001, [C101] (5 CSO, 1 NMW); 23 males, 20 females, border Shaanxi-Sichuan, Dabashan, pass 20 km SSE Zhenping, 1700–1800 m (31°44' N, 109°35' E), 12 July 2001, leg. M. Schülke [C01-07C], mixed forest, small creek valley, moss, bark, sifted (38 CSB, 5 NMW); eight males, 10 females, border Shaanxi-Sichuan, Dabashan, pass 20 km SSE Zhenping, 1700–1800 m (31°44' N, 109°35' E), 9–12 July 2001, small creek valley, young mixed forest, leaf litter, moss, leg. D. Wrase [07] (16 CSB, 2 NMW); two males, four females: China: Hubei: Dabashan, pass E Mt. Dashennongjia, 12 km NW Muyuping (31°30' N, 110°21' E), 1950 m, 19 July 2001, leg. A. Smetana [C111] (CSO); one male, one female, Hubei: Dabashan, pass E Mt. Dashennongjia, 12 km NW Muyuping (31°30' N, 110°21' E), 2050 m, 19 July 2001, leg. A. Smetana [C112] (CSO); one male, two females, Hubei: Dabashan, pass E Mt. Dashennongjia, 12 km NW Muyuping (31°30' N, 110°21' E), 1950 m, 16 July 2001, leg. M. Schülke [C01-13], dry creek valley, mixed deciduous forest, dead wood, mushrooms, sifted (CSB); one male, two females, Hubei: Dabashan, pass E Mt. Dashennongjia, 12 km NW Muyuping (31°30' N, 110°21' E), 1950–2050 m, 19 July 2001, leg. M. Schülke [C01-13C], creek valley, mixed deciduous forest, dead wood, mushrooms, sifted (CSB); one male, four females, Hubei: Dabashan, pass E Mt.

Dashennongjia, 12 km NW Muyuping (31°30' N, 110°21' E), 1950–2050 m, 22 July 2001, leg. M. Schülke [C01-13E], dry creek valley, mixed deciduous forest, dead wood, mushrooms, sifted (CSB); three males, three females, Hubei: Dabashan, creek valley 8 km NW Muyuping (31°29' N, 110°22' E), 1550–1650 m, 18 July 2001, leg. A. Smetana [C115b] (5 CSO, 1 NMW); one male, Hubei: Dabashan, creek valley 8 km NW Muyuping (31°29' N, 110°22' E), 1550–1650 m, 18 July 2001, leg. M. Schülke [C01-16A], deciduous forest, moss, sifted (CSB); 13 males, three females, Hubei: Dabashan, crk. valley 4 km N Muyuping, 1700 m, 21 July 2001, leg. A. Smetana [C116] (13 CSO, 3 NMW); one male, Hubei: Dalaoshan forest park, 9–15 June 2004, pitfall traps, leg. J. Turna (NMW); three males, two females, Henan: N-Henan, Wangwushan (35°11' N, 112°16' E), 1175 m, 13 June 2007, leg. J. Turna (NMW); one male, China: Hunan: Wulingyuan, N Dayong, Zhangjiajie, 650 m, 29 October 1993, leg. H. Schillhammer [CWBS 1] (NMW); two males, China: Sichuan: Emeishan, 28–29 August 2005, leg. Zhang Yejun (IZ-CAS); one male, Sichuan: Jiulong, 2130 m, 9–12 July 2001, leg. Yu Xiaodong (IZ-CAS); one male, Sichuan: Ebian, Lawu Xiang, Xiaoliang Shan, 1820 m, 7 October 1997, leg. Toshio Kishimoto (CTK); five males, one female, Sichuan: Chengkou, Gaonan, Hojiawan, 1250 m, 26 September 1997, leg. Toshio Kishimoto (CTK); one female, W-Sichuan: Ya'an Pref., Tianquan Co., Jiajin Shan, Vall. above Labahe N.R.St., 57 km W Ya'an (30°06' N 102°25' E), litter bark, fungi, 1800 m, 12 July 1999, leg. M. Schülke (CSB).

### *Description*

Head and pronotum black, shining. Antennae black with basal three segments reddish brown. Elytra and scutellum dark brown. Abdomen black with posterior margin of tergites III–VII narrowly reddish brown. Mandibles, maxillary and labial palpi and legs reddish brown.

Body 5.88–6.53 mm long (HPL = 1.72–1.96 mm). Head of rounded quadrangular shape, 0.82–0.90 mm long, 0.65–0.73 mm wide (HW:HL = 0.80–0.82). Tempora 0.33–0.41 mm long, almost evenly rounded, sparsely and coarsely punctate; eyes moderately large, slightly protruding, 0.25 mm long, 0.60–0.75 times as long as tempora. Dorsal surface of head with scattered, large setiferous punctures along lateral sides, vertex largely impunctate; entire head with distinct and profound microsculpture of transverse waves. Antennae short, first segment long, slightly thickened towards apex, third segment distinctly longer than second, fourth–sixth segments almost as long as wide, seventh–10th segments distinctly transverse, last segment longer than wide, obliquely truncated.

Pronotum slightly narrowed anteriorly, 0.90–1.06 mm long, 0.82 mm wide, slightly wider than head (PW:HW = 1.11–1.25); dorsal rows each with 6–7 punctures, sublateral rows each with two punctures; microsculpture similar to that on head.

Elytra 1.06–1.22 mm long, 1.06–1.22 mm wide, along sides 1.08–1.25 times as long as pronotum, densely and finely punctate, punctures separated by 2–3 times their diameter. Scutellum large, triangular, densely and finely punctate.

Abdomen slightly narrowed posteriorly, widest 0.98–1.14 mm, densely and finely punctate, punctures separated by 1–2 puncture diameters at base, gradually becoming sparser toward apex of each tergite; surface between punctures with exceedingly fine and dense microsculpture of transverse striae; tergites III–V with two basal lines, elevated area between basal lines almost impunctate.

*Male.* Tergite VIII with apical margin distinctly produced medioapically (Figure 2F). Sternite VIII with wide and shallow medioapical emargination filled by dense and long apical setae laterally, similar to that of *G. kambaitiensis* Scheerpeltz. Sternite IX largely membranous at middle portion, basal portion narrow and long, almost symmetrical; apical piece very short, shortly and sparsely setose (Figure 2D). Tergite X simple, triangular, with apex subtruncated, bearing two long apical setae (Figure 2G).

Aedeagus large; median lobe long, distinctly exceeding paramere, apical portion narrowed into subacuate apex (Figure 2A); in lateral view, median lobe with a small subapical dorso-lateral extension (Figure 2B); paramere with apical margin shallowly and widely emarginated, with four strong medial setae, face adjacent to median lobe with sensory peg setae arranged closely at apical margin, but sparing out middle, where stout medial setae situated. (Figure 2C).

*Female.* Tergite VIII with apical margin slightly produced medio-apically (Figure 2H). Sternite VIII subrounded at apex, without medio-apical emargination (Figure 2I). Tergite X triangular, with inconspicuously emarginate apex, bearing two long apical setae (Figure 2E).

#### *Etymology*

The specific epithet *invisus* (Latin: unseen) refers to the fact that initially the species was erroneously mistaken for *Gabrius kambaitiensis*.

#### *Distribution*

The species is widely distributed in China (Beijing, Zhejiang, Shaanxi, Hubei, Hunan, Henan, Sichuan).

#### *Remarks*

In this group, the new species is closely related to *Gabrius kambaitiensis* Scheerpeltz, 1965 and *G. eminens* Schillhammer, 2001. *Gabrius invisus* sp. nov. can be easily distinguished from *G. kambaitiensis* by distinctly acute apex of median lobe of aedeagus. The new species differs from *G. eminens* by middle portion of apical margin of paramere without sensory peg setae and distinctly narrower apical portion of median lobe of aedeagus in lateral view.

***Gabrius cinctiventris*** Scheerpeltz, 1965; first record from China  
Scheerpeltz 1965, p. 229 (type locality: Kambaiti).  
Schillhammer 1997, p. 52 (characters, Myanmar).  
Herman 2001, p. 2617 (world catalogue).

#### *Examined material*

Four males, four females, China: Yunnan: Nujiang Lisu Aut. P., Gongshan Co., Gaoligongshan, creek valley 17 km N Gongshan (27°45' N, 98°35' E), 2500 m, 21 June 2005, leg. M. Schülke [C2005-12], litter and debris around snow field, sifted during rain (6 CSB, 2 NMW); one male, one female, Yunnan: Dali: Cangshan, 2085–2200 m, 30 July 2006, leg. Li Xiaoyan (IZ-CAS).

*Distribution*

China (Yunnan), Myanmar.

***Gabrius kambaitiensis*** Scheerpeltz, 1965; first record from China Scheerpeltz 1965, p. 228 (type locality: Kambaiti). Schillhammer 1997, p. 54 (characters, Myanmar). Herman 2001, p.: 2629 (world catalogue).

*Examined material*

Two males, China: Yunnan: Nujiang Lisu Aut. P., Gongshan Co., Gaoligongshan, creek valley 17 km N Gongshan (27°45' N, 98°35' E), 2500 m, 21 June 2005, leg. M. Schülke [C2005-12A], litter and debris around snow field (CSB, NMW).

*Distribution*

China (Yunnan), Myanmar.

***Gabrius deceptor*** group

***Gabrius smetanai*** Schillhammer, 1997; first record from China Schillhammer 1997, p. 22 (type locality: Nepal: Khandbari District, above Tashigaon, 3550 m). Herman 2001, p. 2654 (world catalogue). Smetana 2004, p. 637 (catalogue for Palaearctic region).

*Examined material*

One male, China: Yunnan: Gongshan (27°42' N, 98°30' E), 2955 m, 26 September 2007, leg. Liang Hongbin & Shi Hongliang (IZ-CAS); one female, Yunnan: Gongshan (27°36' N, 98°29' E), 3331 m, 3 October 2007, leg. Shi Hongliang (IZ-CAS).

*Distribution*

China (Yunnan), Nepal.

***Gabrius imitator*** group

***Gabrius imitator*** (Fauvel, 1895); first record from China Fauvel 1895, p. 265 (*Philonthus*, type locality: Carin Asciiü Ghecù, 1400–1500 m). Cameron 1932, p. 149 (*Philonthus*, characters, Burma, India). Coiffait 1982, p. 27 (*Gabrius*, characters, Nepal). Schillhammer 1997, p. 45 (*Gabrius*, lectotype designation: Carin Asciiü Ghecù, 1400–1500 m; characters, Burma, Thailand). Herman 2001, p. 2628 (*Gabrius*, world catalogue).

*Examined material*

One male, China: Sichuan: Dujiangyan: Longchi, 25 August 2005, leg. Zhao Caiyun (IZ-CAS); one male, four females, Yunnan: Nujiang Lisu Aut. Pref., Gongshan Co., Gaoligongshan, small creek valley 17 km N Gongshan (27°54.41' N, 98°39.55' E), 1525–1600 m, along creek, under stones, gravel, leaf litter, sifted, 20 June 2005, leg. M. Schülke [C2005-15] (CSB).

*Distribution*

China (Sichuan, Yunnan), Myanmar, Thailand.

***Gabrius nigrutilus*** group

***Gabrius egens*** (Sharp, 1874); first record from China

Sharp 1874, p. 44 (*Philonthus*, type locality: Hiogo).

Smetana 1960, p. 303 (*Gabrius*, characters, Japan).

Smetana 1984, p. 130 (*Gabrius*, characters, Japan).

Cho & Lee 1997, p. 272 (*Gabrius*, characters, Korea).

Herman 2001, p. 2621 (*Gabrius*, world catalogue).

Smetana 2004, p. 634 (*Gabrius*, catalogue for Palaearctic region).

*Examined material*

Three males, China: Zhejiang: Fengyangshan, 1050 m, 31 July 2008, leg. Zhou Yulingzi (IZ-CAS); one male, Zhejiang: Linan: Qianqingtang, 1100 m, 6 August 2008, leg. Zhou Yulingzi (IZ-CAS).

*Distribution*

China (Zhejiang), Japan, Korea.

***Gabrius osseticus*** group

***Gabrius zerchei*** Schillhammer, 1996; first record from China

Schillhammer 1996, p. 65 (type locality: Russia: Primorskiy Krai Ryazanovka, 14 km SW Slavyanka).

Herman 2001, p. 2664 (world catalogue).

Smetana 2004, p. 637 (catalogue for Palaearctic region).

*Examined material*

One male, China: Beijing: Mentougou: Liyuanling, 1050 m, 15 September 2000, leg. Yu Xiaodong (IZ-CAS); one male, one female, Beijing: Mentougou: Liyuanling, 1050–1100 m, 27 June–July 2000, leg. Yu Xiaodong (IZ-CAS).

*Distribution*

China (Beijing), Russia.

**Acknowledgements**

The authors wish to express their sincere gratitude to the persons mentioned in the Materials and methods chapter for providing specimens. This study was supported by the National Natural Science Foundation of China (NSFC–31071909, NSFC–J0930004), the National Key Technology R&D Program (2008BAC39B02), CAS Innovation Program (KSCX2–YW–Z–0910), and a grant from the Key Laboratory of Zoological Systematics and Evolution of CAS (No. O529YX5105).

**References**

- Assing V. 2004. New species and records of Staphylinidae from Turkey III (Insecta: Coleoptera). Linz biol Beitr 36:669–733.

- Assing V. 2009. On the Staphylinidae of Turkey VI. Thirteen new species and additional records (Insecta: Coleoptera). *Koleopterol Rundsch* 79:117–172.
- Bernhauer M. 1910. Zur Staphylinidenfauna des palaearktischen Gebietes. *Soc Entomol* 25:71–71, 78–79.
- Cameron M. 1932. The fauna of British India, including Ceylon and Burma. Coleoptera. *Staphylinidae*. Vol. III. London: Taylor & Francis. 443 p.
- Chani-Posse MR. 2009. Revision of some types of *Philonthus* Stephens and *Gabrius* Stephens from southern South America (Coleoptera: Staphylinidae), with nomenclatural notes. *Zootaxa* 2034:31–42.
- Cho YB, Lee CE. 1997. Taxonomic study of the genus *Gabrius* (Coleoptera: Staphylinidae) with two new species from Korea. *Korean J Syst Zool* 13:271–278.
- Coiffait H. 1951. Notes sur les Staphylinides. I. Les *Gabrius* Steph. de la Faune de France. *Rev Fr Entomol* 18:104–115.
- Coiffait H. 1974. Coléoptères staphylinides de la région paléarctique occidentale II. Sous famille Staphilininae, Tribus Philonthini et Staphylinini. *Nouv Rev Entomol, Supplément* 4:1–593.
- Coiffait H. 1982. Contribution à la connaissance des Staphylinides de l'Himalaya (Népal, Ladakh, Cachemire) (Insecta: Coleoptera: Staphylinidae). *Senckenberg Biol* 62:21–179.
- Fauvel A. 1895. Staphylinides nouveaux de l'Inde et de la Malaisie. *Rev Entomol* 14:180–286.
- Herman LH. 2001. Catalog of the Staphylinidae (Insecta: Coleoptera) 1758 to the end of the millenium. *B Am Mus Nat Hist* 265:2241–3020.
- Hromadka L. 2007. *Gabrius phelsuma* sp. n. (Coleoptera: Staphylinidae: Philonthina) from Madagascar. *Klapalekiana* 43:187–190.
- Li L., Schillhammer H. & Zhou HZ. 2010. Fourteen new species of the genus *Gabrius* Stephens (Coleoptera: Staphylinidae: Philonthina) from China. *Zootaxa* 2572:1–24.
- Luze G. 1903. Eine neue Art der Staphyliniden-Gattung *Philonthus* Curtis aus Mitteleuropa. *Verhandlungen der k. k. Zool-botan Gesellschaft Wien* 53:386.
- Scheerpeltz O. 1965. Wissenschaftliche Ergebnisse der Schwedischen Expedition 1934 nach Indien und Burma. Coleoptera Staphylinidae (except Megalopsidiinae et Steninae). *Ark Zool* 17:93–371.
- Schillhammer H. 1996. New genera and species of Asian Staphylinini (Coleoptera: Staphylinidae: Staphylininae). *Koleopterol Rundsch* 66:59–71.
- Schillhammer H. 1997. Taxonomic revision of the Oriental species of *Gabrius* Stephens (Coleoptera: Staphylinidae). *Mono Coleop* 1:1–139.
- Schillhammer H. 2000. New species and records of Oriental and East Palaearctic *Gabrius* Stephens, 1829 (Insecta: Coleoptera: Staphylinidae). *Ann Naturhist Mus Wien* 102 (B):117–142.
- Schillhammer H. 2001. The Taiwan species of *Gabrius* Stephens (Insecta: Coleoptera: Staphylinidae). *Ann Naturhist Mus Wien* 103 (B):391–411.
- Schillhammer H. 2003. On some Central Asian species of *Gabrius astutus* group (Insecta: Coleoptera: Staphylinidae). *Ann Naturhist Mus Wien* 104 (B):353–361.
- Schillhammer H. 2004. New records, synonyms and nomenclatorial changes in the tribe Staphylinini (Insecta: Coleoptera: Staphylinidae). *Ann Naturhist Mus Wien* 105 (B):319–325.
- Schillhammer H. 2007. First record of *Gabrius* from Laos with description of a new species (Coleoptera: Staphylinidae: Staphylininae). *Entomol Prob* 37:77–78.
- Sharp DS. 1874. The Staphylinidae of Japan. *Entomol Soc London Trans* 1–103.
- Shibata Y. 2007. A new species of the genus *Gabrius* (Coleoptera, Staphylinidae) from Taiwan. *Elytra* 35:63–67.
- Smetana A. 1953. Pozámky k rodu *Gabrius* Steph. (Col. Staphylinidae). *Acta Entomol Mus Nat Prag* 28:165–180.
- Smetana A. 1960. Monographische Bearbeitung der paläarktischen Arten der Gattung *Gabrius* Curt. aus der *nigritulus*-Gruppe. *ChangDeut Entomol Z* 7:295–356.

- Smetana A. 1973. Ueber einige von Dr. M. Bernhauer beschriebene *Gabrius*-Arten (Coleoptera, Staphylinidae). *Nouv Rev Entomol* 3:125–136.
- Smetana A. 1984. Review of the Japanese species of the genus *Gabrius* Stephens (Coleoptera, Staphylinidae). *Pan Pac Entomol* 60:122–150.
- Smetana A. 2004. Staphylinidae, subtribe Philonthina,. In: Löbl I, Smetana A, editors. *Catalogue of Palaearctic Coleoptera, Vol. 2. Hydrophiloidea – Histeroidea – Staphylinoidea*. Stenstrup: Apollo Books. p. 629–653.
- Stephens JF. 1829. *The nomenclature of British insects; being a compendious list of such species as are contained in the Systematic Catalogue of British Insects, and forming a guide to their classification, &c.&c.* London: Baldwin and Cradock. 68 p.